



# *23rd Annual Sale*

**Thursday,  
4th October, 2018  
on property**

Sale to commence  
at 1.00 p.m. (EST)

**Auctionsplus will be operating**



**auctionsplus**  
*agricultural auctions at a click*

**Vendors: A. J. & J. J. Donnan**

## SHOW RECORD

- 1995 – Champion Ram National Field Days
- 1996 – Champion Ewe Melbourne Royal Show
- 1997 – Champion Ewe Melbourne Royal Show
- 1999 – Res. Champion Ram Melbourne Royal Show
- 2001 – Champion Ewe Melbourne Royal Show
- 2001 – Champion Ram Melbourne Royal Show
- 2008 – Senior Champion Adelaide Royal Show
- 2010 – Supreme Champion Ram Adelaide Royal Show
- 2011 – Junior Champion Ram Adelaide Royal Show
- 2012 – Junior Champion Ram Adelaide Royal Show
- 2014 – Export Lamb Pair Adelaide Royal Show
- 2015 – Winner of White Suffolk Lamb Production Class in Export and in Trade, Adelaide Royal
- 2015 – Winner of Interbreed Lamb Production Class in Export, Adelaide Royal
- 2016 – Supreme Short Wool Interbreed Ram, Hamilton Sheepvention
- 2016 – Supreme Interbreed Champion WS Ram Adelaide Royal
- 2016 – Grand Champion Suffolk Ram Adelaide Royal
- 2017 – Senior WS Champion Ram Hamilton Sheepvention
- 2017 – White Suffolk Lamb Production Class Hamilton Sheepvention



**Anden 170185 & Anden 170284 – Lots 43 & 45**  
2nd White Suffolk & Interbreed Lamb Production Class in Export,  
2018 Royal Adelaide Show.

# ORDER OF SALE FROM 1PM

215 lots comprising:

- **9 Specially Selected Kerangie Suffolk Ewes**
  - **29 Specially Selected Anden White Suffolk Ewes**
  - **24 Specially Selected Anden White Suffolk Rams**
- **48 Anden White Suffolk Flock Rams**
  - **60 Anden Ultra White Rams**
- **33 Anden White Suffolk Flock Rams**
  - **12 Kerangie Suffolk Rams**

SALE TO BE HELD ON PROPERTY 'ANDEN STUD'  
1117 Willangie-Woomelang Road, Willangie, Vic.  
(See map on back cover).

**Auctions Plus will be operating for Lots 1-62.  
For more information call Peter Rollason,  
Elders 0419 600 323.**

*Please note: Light luncheon and drinks  
will be catered for on the day.*

All selected rams and ewes will have pedigree  
displayed on the day.

Lambplan participant – Ovine Brucellosis  
Accredited Free Flock – Ovine Johne's MN3 Accredited.  
All specially selected rams and ewes are HRF.

**For further information, contact selling agents:**

- Elders Limited – Shane McLoughlan, Birchip  
0418 844 533

4% Rebate to Agents who attend with buyer and who  
register their attendance at the front desk on the day.

Inspection of stock from 11.00 a.m. sale day or  
during week prior by arrangement with  
Andrew Donnan, mobile 0427 812 227  
phone (03) 5081 2227, fax (03) 5081 2255  
website: [andenstud.com.au](http://andenstud.com.au)

## *From the Anden Stud*

Welcome to the 23rd annual Anden Stud Sale. We are pleased to present another line up of quality rams and ewes, that we believe provide the best genetics to suit the needs of the buyers and strengthen the industry.

Congratulations to previous buyers of Anden flock rams, who have had much success with lambs at market again this year. We have also had a tremendous amount of positive feedback from buyers, regarding lambing ease, an increase in lamb and ewe survivability at birth and lamb viability.

While the season is proving to be a tough one, it is encouraging to see outstanding sheep markets, which are holding strong. Here at Anden, we know that it is essential to the buyer, to make decisions based on livestock growth and sustainability. Over the years, we have focused on genetics that will stand-up to whatever the climate has to throw at the industry.

We are thrilled to offer both White Suffolk and Suffolk ewes again this year, which have been selected on their elite attributes to their respective breeds. These ewes will also be on Auctions Plus, along with 24 specially selected White Suffolk rams: Lots 1-62. We understand time is precious and distances needed to travel, so we hope the Auctions Plus system will give all interested buyers the opportunity to be involved in the sale.

Once again the Rams on offer are accompanied by outstanding lambplan figures. We have increased the number of Anden Ultra White/EasyCare Composite rams. Lambing results, from previous buyers continue to support our breeding objectives with the Ultra Whites. We are excited with the direction our breeding program is heading.

From the paddock to the show arenas, Anden White Suffolks and Kerangie Suffolk rams presented at the 2018 Hamilton Sheepvention and the Elite White Suffolk and Suffolk Show in Bendigo. We also had a team of 8 Anden White Suffolk Rams show at the Adelaide Royal. Whilst we were delighted to win several ribbons at each showing, we were thrilled with Anden rams 170185 & 170284 (sale lots 43 & 45) who placed second in the White Suffolk and the Interbreed Lamb Production class in Export at Adelaide. The Lamb Production classes in Export & Trade are true measures of the industries breeding objectives and winning a place in these classes validates what the Anden Stud is all about.

Also with regards to showing, Andrew had the honour to judge the Suffolk rams and ewes at the 2018 Adelaide Royal. It was a privilege to be asked to judge at such an elite Sheep Show.

On a personal note, in December we were delighted to welcome our first grandson and son, Arlo John Donnan into the world and onto the farm; a little brother for Leni. We are also thrilled to announce the approaching marriage of our daughter Ashlee to Laurence Harrison, on 13th October, with the wedding being held here at the farm. We wish Ash and Laurie all the very best for their Wedding day and their future together.

As always, we welcome your interest in the Anden Stud and look forward to seeing you on October 4th.

Regards, Andrew & Denita, Joel & Lauren

# *Flock History*

## **Anden White Suffolks**

The Anden White Suffolks, Flock No. 91 was founded in 1989, by Andrew and John Donnan. Initially using Suffolk ewes from Kerangie and Stone Haven Studs and have built a sire base, introduced from top White Suffolk Studs and breeding elite Anden White Suffolk rams. In 2016 John (86) sold his share of the Stud to Joel Donnan. Joel grew up on the farm and has worked full time since 2011. Joel's sheep knowledge and insight will be instrumental to the Anden Stud's future.

Anden was built on a passion to provide the best genetics to breeders and continues to strive for excellence. Results at market reflect the enhancement that the Anden rams have given to previous buyers. We have had much success at the Royal Adelaide Show over the years and acknowledge the Stud's achievements.

## **Anden Ultra Whites**

2017 saw the mark of a new era, with the marketing of the Anden Ultra White Stud.

Andrew and Joel have been working on producing a consistent line of composite White Dorper/Poll Dorset cross rams since 2010. The breeding has come from the result of using high performance Dorper and Ultra White sires over our best performing **Viewdale Poll Dorset** ewes.

The Ultra White 'Easy-Care' criteria goal: Good fertility, Good milking and mothering instinct, Low/moderate birth weights, Good growth and sound structure, Good muscling, High yielding carcass across medium-heavy weight carcasses, The right amount of fat, Ability to maintain exceptional do ability and hardiness of the Dorper breed, Good shedding ability.

\*\*The transition from Anden Easy-Care composites to Anden Ultra White is based on the Ultra White breed criteria, which clarifies the number of generations of cross breeding before registering as an Ultra White.

## **Kerangie Suffolks**

The History of the Suffolks is one of John Donnan's passions. John and his wife, Melva, founded the Kerangie Stud in 1971 and had many highlights and much success at shows.

In 2010 Andrew re-activated the Suffolk Stud name Kerangie, Flock No. 2187. Andrew initially purchased Suffolk Ewes in lamb from the Burwood Stud. The Kerangie Stud is determined to maintain standards, with high performance and quality at the top of our agenda.

## **Viewdale Poll Dorsets**

In 1960 George and Stan Donnan founded and registered the Viewdale Stud, Flock No. 368. This Poll Dorset Stud went into recess in the early 80's. In 2006 Andrew re-activated the Stud, which was once run by his grandfather and father.

With the introduction of the Ultra Whites, 2016 was the last time Poll Dorsets were sold in the Anden Stud Sale.

The genetics from the Viewdale Poll Dorset Stud have played a huge part in the development of the Anden Ultra Whites breeding program. We hope we haven't disillusioned those buyers with Poll Dorset backgrounds, but encourage them to try an Anden White Suffolk or an Ultra White... knowing they will be pleasantly surprised come market day.

# SIRE MEMO

## Anden White Suffolks

### Proven performers in the Anden Stud history

Anden 70007 – Record price at 2008 Royal Adelaide Show \$28,500.

Anden 90168 – ‘Smoothie’ – Supreme Champion Ram 2010 Royal Adelaide Show.

Wheetelände 94572 – Purchased for \$5,000.

Pollambi 110451.

Burwood 110959 – Purchased for \$21,000 (half share).

Anden 130041 – Top pick lamb from Pollambi 110451.

Kurralea 130305 – Purchased for \$11,000 Ram with nice structure and good Suffolk type. Sire of Anden 150277.

Anden 130288 – Very high growth ram.

Farrer 140188 – Linkage Ram.

Anden 140298 – Sold for Equal National Record Price for a meat sheep – \$36,000 in 2015.

Anden 140300 – Very correct high muscle ram. Full ET brother to 140298.

Anden 150346 – Used as Ram lamb. Correct, muscly Ram. Sold for \$18,000 in 2016.

### New sires listed in this catalogue

Anden 130041 – Proven Sire at Anden. An early maturing ram.

Anden 150277 – Supreme Champion Ram 2016 Royal Adelaide Show and sold for National Record Price for a meat sheep \$68,000 in 2016 sale.

Anden 160177 – Medium size ram. Well-muscled, early maturing ram.

Anden 160224 – Stylish clean ram.

Detpa Grove 150576 – Clean stylish ram, good White Suffolk type.

Farrer 150049 – Well balance of figures with good eating qualities.

Farrer 150183 – High muscle ram.

Langley Heights 090160 – Top ram for eating quality.

Bundara Downs 122261 – Linkage sire. High data. High accuracy.

## Anden Ultra Whites

### Sires listed in this catalogue

Anden CT 150840 – Anden CT 160823 – Anden CT 160930 – Hillcroft Farms 148303 – Hillcroft Farms 167470 – Hillcroft Farms 167595 – Hillcroft Farms 167436.

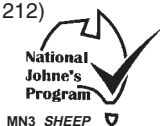
## Kerangie Suffolks

### Sires listed in this catalogue

Glencraig 150406 – Oakwood 130019 – Lynburn 150 247.

**All sheep are presented with across flock EBVS as at August 2018, for some assistance in selecting stud sheep across all of the Australian White Suffolk Flocks using the Carcase Plus Index and Lamb 20-20 Index.**

- Ovine Johne’s Disease MN3 (2002) Status (VS 1212)
- Ovine Brucellosis Accredited Free (No. 2063)
- Footrot free
- All sheep are Glanvac 6 with B12 vaccinated, drenched & Avenge backlined (Aug.).



# 9 SPECIALLY SELECTED KERANGIE SUFFOLK EWES



**Lot**      **Tag**                      **Sire**                      **DOB**  
**1**      **170504**    **tw**    **Glencraig 150406**      **27/05/2017**  
 Dam: Kerangie 120069      SOD: Kerangie 100017

BWT	WWT	PWWT	PFAT	PEMD	CARCASE+	20-20
0.41	7.60	12.32	-0.03	1.12	173.63	109.86

**Pur./Price** .....

**2**      **170511**                      **Lynburn 150247**                      **27/05/2017**  
 Dam: Kerangie 150518      SOD: Noble-Lee 130984

BWT	WWT	PWWT	PFAT	PEMD	CARCASE+	20-20
0.41	7.68	12.46	0.28	1.38	176.10	110.20

**Pur./Price** .....

**3**      **170553**    **tw**    **Glencraig 150406**                      **4/08/2017**  
 Dam: Kerangie 150516      SOD: Noble-Lee 130984

BWT	WWT	PWWT	PFAT	PEMD	CARCASE+	20-20
0.56	8.62	13.56	-0.24	0.56	174.88	110.00

**Pur./Price** .....

**4**      **170568**    **qu**    **Glencraig 150406**                      **9/08/2017**  
 Dam: Burwood 100076      SOD: Burwood 071494

BWT	WWT	PWWT	PFAT	PEMD	CARCASE+	20-20
0.48	7.08	11.07	0.03	0.74	163.56	108.49

**Pur./Price** .....

# SPECIALLY SELECTED KERANGIE SUFFOLK EWES

**Lot 5      Tag 170527    tw    Sire Oakwood 130019      DOB 15/07/2017**  
 Dam: Kerangie 140512      SOD: Kerangie 120033

BWT	WWT	PWWT	PFAT	PEMD	CARCASE+	20-20
0.47	8.32	12.56	-0.04	0.90	173.75	109.86

**Pur./Price** .....

**Lot 6      Tag 170518    tw    Sire Glenraig 150406      DOB 12/06/2017**  
 Dam: Kerangie 130526      SOD: Kerangie 120033

BWT	WWT	PWWT	PFAT	PEMD	CARCASE+	20-20
0.43	8.51	13.89	-0.46	0.46	175.51	110.11

**Pur./Price** .....

**Lot 7      Tag 170523    tr    Sire Lynburn 150247      DOB 14/07/2017**  
 Dam: Kerangie 150534      SOD: Noble-Lee 130984

BWT	WWT	PWWT	PFAT	PEMD	CARCASE+	20-20
0.41	8.09	13.26	0.41	1.37	179.17	110.61

**Pur./Price** .....

**Lot 8      Tag 170575    tw    Sire Glenraig 150406      DOB 16/08/2017**  
 Dam: Kerangie 140526      SOD: Kerangie 120033

BWT	WWT	PWWT	PFAT	PEMD	CARCASE+	20-20
0.50	8.66	13.85	0.00	1.05	180.58	110.78

**Pur./Price** .....

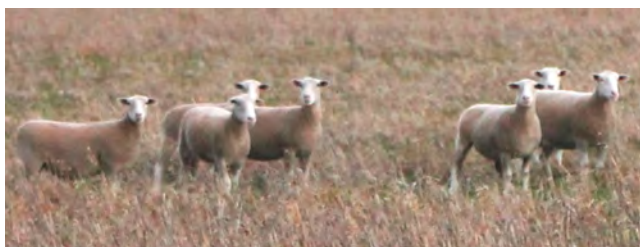
**Lot 9      Tag 170549    tw    Sire Glenraig 150406      DOB 1/08/2017**  
 Dam: Kerangie 150513      SOD: Noble-Lee 130984

BWT	WWT	PWWT	PFAT	PEMD	CARCASE+	20-20
0.52	8.21	12.68	0.13	0.12	164.35	108.58

**Pur./Price** .....



# 29 SPECIALLY SELECTED ANDEN WHITE SUFFOLK EWES



**Lot**      **Tag**                      **Sire**                      **DOB**  
**10**      **170349**                      **Detpa Grove 150576**      **21/08/2017**  
 Dam: Anden 130295      SOD: Pollambi 110451

BWT	WWT	PWWT	PFAT	PEMD	CARCASE+	20-20
0.30	9.90	16.09	-0.46	1.65	200.03	113.45

Pur./Price .....

**11**      **170388**                      **Detpa Grove 150576**      **29/08/2017**  
 Dam: Anden 150349      SOD: Anden 140298

BWT	WWT	PWWT	PFAT	PEMD	CARCASE+	20-20
0.48	9.78	15.52	-0.54	1.17	192.60	112.41

Pur./Price .....

**12**      **170236 tw**      **Anden 160177**                      **8/08/2017**  
 Dam: Anden 150207      SOD: Anden 140309

BWT	WWT	PWWT	PFAT	PEMD	CARCASE+	20-20
0.14	9.39	15.08	-0.16	2.29	201.40	113.67

Pur./Price .....

**13**      **170200 tw**      **Anden 150277**                      **3/08/2017**  
 Dam: Anden 160081      SOD: Farrer 140188

BWT	WWT	PWWT	PFAT	PEMD	CARCASE+	20-20
0.63	10.81	16.91	-0.36	1.18	199.22	113.27

Pur./Price .....

# SPECIALLY SELECTED ANDEN WHITE SUFFOLK EWES

**Lot      Tag                      Sire                                      DOB**  
**14      170371 tr      Detpa Grove 150576      27/08/2017**  
 Dam: Anden 140157      SOD: Anden 130288

BWT	WWT	PWWT	PFAT	PEMD	CARCASE+	20-20
0.22	10.04	16.10	-0.15	1.98	202.91	113.86

Pur./Price .....

**15      170336 tw      Anden 160177                      20/08/2017**  
 Dam: Anden 150075      SOD: Anden 130041

BWT	WWT	PWWT	PFAT	PEMD	CARCASE+	20-20
0.24	10.83	17.31	-0.28	2.54	215.84	115.60

Pur./Price .....

**16      170280 tw      Anden 160224                      16/08/2017**  
 Dam: Anden 160116      SOD: Anden 130041

BWT	WWT	PWWT	PFAT	PEMD	CARCASE+	20-20
0.37	11.25	17.65	-1.02	1.09	204.56	114.05

Pur./Price .....

**17      170282 tw      Anden 160224                      16/08/2017**  
 Dam: Anden 160004      SOD: Trigger Vale 140835

BWT	WWT	PWWT	PFAT	PEMD	CARCASE+	20-20
0.34	10.35	15.80	-0.46	1.82	202.01	113.71

Pur./Price .....

**18      170058 tw      Farrer 150049                      27/05/2017**  
 Dam: Anden 120300      SOD: Anden 110318

BWT	WWT	PWWT	PFAT	PEMD	CARCASE+	20-20
0.38	10.17	15.83	-0.36	1.26	194.90	112.74

Pur./Price .....

# SPECIALLY SELECTED ANDEN WHITE SUFFOLK EWES

**Lot      Tag                      Sire                      DOB**  
**19      170076                      Farrer 150049                      3/06/2017**  
 Dam: Anden 110274    SOD: Anden 100327

BWT	WWT	PWWT	PFAT	PEMD	CARCASE+	20-20
0.37	9.69	15.18	-0.15	1.67	195.34	112.80

**Pur./Price .....**

**20      170348 tw      Detpa Grove 150576      21/08/2017**  
 Dam: Anden 150334    SOD: Kurralea 130305

BWT	WWT	PWWT	PFAT	PEMD	CARCASE+	20-20
0.44	10.09	15.82	0.17	2.23	203.60	113.91

**Pur./Price .....**

**21      170378 tw      Detpa Grove 150576      28/08/2017**  
 Dam: Anden 150229    SOD: Anden 140300

BWT	WWT	PWWT	PFAT	PEMD	CARCASE+	20-20
0.26	9.41	15.50	-0.42	1.90	199.53	113.39

**Pur./Price .....**

**22      170361 tw      Farrer 150049                      22/08/2017**  
 Dam: Anden 140299    SOD: Burwood 110959

BWT	WWT	PWWT	PFAT	PEMD	CARCASE+	20-20
0.45	10.92	16.61	-0.60	1.33	201.09	113.56

**Pur./Price .....**

**23      170126 tr      Detpa Grove 150576      18/06/2017**  
 Dam: Anden 140273    SOD: Burwood 110959

BWT	WWT	PWWT	PFAT	PEMD	CARCASE+	20-20
0.34	10.04	16.27	-0.21	1.47	197.86	113.15

**Pur./Price .....**

# SPECIALLY SELECTED ANDEN WHITE SUFFOLK EWES

**Lot      Tag                      Sire                      DOB**  
**24      170367 tw      Detpa Grove 150576      26/08/2017**  
 Dam: Anden 150104      SOD: Anden 130041

BWT	WWT	PWWT	PFAT	PEMD	CARCASE+	20-20
0.26	9.39	15.24	-0.51	1.42	193.42	112.57

**Pur./Price** .....

**25      170252 tw      Anden 160177                      11/08/2017**  
 Dam: Anden 150177      SOD: Kurralea 130305

BWT	WWT	PWWT	PFAT	PEMD	CARCASE+	20-20
0.62	11.96	17.94	-1.13	1.11	207.90	114.45

**Pur./Price** .....

**26      170259 tw      Farrer 150049                      12/08/2017**  
 Dam: Anden 130320      SOD: Anden 120321

BWT	WWT	PWWT	PFAT	PEMD	CARCASE+	20-20
0.43	10.95	16.75	-0.73	1.45	203.61	113.91

**Pur./Price** .....

**27      170257 tr      Farrer 150183                      11/08/2017**  
 Dam: Anden 100036      SOD: Detpa Grove 080297

BWT	WWT	PWWT	PFAT	PEMD	CARCASE+	20-20
0.36	9.43	14.77	-0.20	2.11	198.51	113.23

**Pur./Price** .....

**28      170380 tw      Anden 160224                      28/08/2017**  
 Dam: Anden 160213      SOD: Anden 150036

BWT	WWT	PWWT	PFAT	PEMD	CARCASE+	20-20
0.39	10.67	16.84	-0.79	1.50	204.14	113.99

**Pur./Price** .....

# SPECIALLY SELECTED ANDEN WHITE SUFFOLK EWES

**Lot**      **Tag**                      **Sire**                      **DOB**  
**29**      **170243 tw**      **Anden 160224**              **10/08/2017**  
 Dam: Anden 160144      SOD: Anden 150092

BWT	WWT	PWWT	PFAT	PEMD	CARCASE+	20-20
0.29	10.92	16.91	-0.53	1.69	206.05	114.27

Pur./Price .....

**30**      **170318 tr**      **Farrer 150183**              **18/08/2017**  
 Dam: Anden 120327      SOD: Anden 110318

BWT	WWT	PWWT	PFAT	PEMD	CARCASE+	20-20
0.37	10.61	16.33	-0.45	1.76	203.70	113.93

Pur./Price .....

**31**      **170376**              **Anden 160224**              **28/08/2017**  
 Dam: Anden 160090      SOD: Anden 130041

BWT	WWT	PWWT	PFAT	PEMD	CARCASE+	20-20
0.18	9.22	15.24	-0.48	1.78	196.97	113.06

Pur./Price .....

**32**      **170116**              **Detpa Grove 150576**      **13/06/2017**  
 Dam: Anden 130302      SOD: Anden 120321

BWT	WWT	PWWT	PFAT	PEMD	CARCASE+	20-20
0.36	7.87	13.12	-0.27	1.72	184.93	111.40

Pur./Price .....

**33**      **170326 tr**      **Detpa Grove 150576**      **19/08/2017**  
 Dam: Anden 130379      SOD: Anden 110318

BWT	WWT	PWWT	PFAT	PEMD	CARCASE+	20-20
0.32	9.08	14.87	-0.17	1.41	189.89	112.08

Pur./Price .....

# SPECIALLY SELECTED ANDEN WHITE SUFFOLK EWES

**Lot**      **Tag**                      **Sire**                      **DOB**  
**34**      **170297**                      **Detpa Grove 150576**      **17/08/2017**  
 Dam: Anden 150199      SOD: Anden 140309

BWT	WWT	PWWT	PFAT	PEMD	CARCASE+	20-20
0.25	9.35	15.36	-0.18	1.93	198.28	113.23

Pur./Price .....

**35**      **170246 tr**      **Farrer 150183**                      **11/08/2017**  
 Dam: Anden 130056      SOD: Pollambi 110451

BWT	WWT	PWWT	PFAT	PEMD	CARCASE+	20-20
0.21	10.27	16.56	-0.01	2.65	212.08	115.10

Pur./Price .....

**36**      **170205 tw**      **Farrer 150183**                      **4/08/2017**  
 Dam: Anden 100377      SOD: Anden 090168

BWT	WWT	PWWT	PFAT	PEMD	CARCASE+	20-20
0.21	9.07	14.47	-0.03	2.52	200.57	113.54

Pur./Price .....

**37**      **170384 tw**      **Detpa Grove 150576**      **28/08/2017**  
 Dam: Anden 130315      SOD: Anden 120321

BWT	WWT	PWWT	PFAT	PEMD	CARCASE+	20-20
0.23	7.87	13.74	-0.05	2.35	193.42	112.57

Pur./Price .....

**38**      **170375**                      **Anden 160224**                      **28/08/2017**  
 Dam: Anden 160077      SOD: Anden 130041

BWT	WWT	PWWT	PFAT	PEMD	CARCASE+	20-20
0.22	9.99	16.26	-0.47	2.06	205.49	114.21

Pur./Price .....

# 24 SPECIALLY SELECTED ANDEN WHITE SUFFOLK STUD RAMS

**Lot Tag Sire DOB**  
**39 170045 Langley Heights 090160 25/05/2017**

Dam: Anden 150151 SOD: Kurralea 130305

BWT	WWT	PWWT	PFAT	PEMD	CARCASE+	20-20
0.51	11.75	18.19	-0.67	1.06	205.83	114.66

**Pur./Price** .....



**Lot Tag Sire DOB**  
**40 170046 Anden 150277 26/05/2017**

Dam: Anden 140323 SOD: Anden 130041

BWT	WWT	PWWT	PFAT	PEMD	CARCASE+	20-20
0.43	10.27	16.22	-0.64	1.90	204.91	113.90

**Pur./Price** .....



# SPECIALLY SELECTED ANDEN WHITE SUFFOLK STUD RAMS

**Lot      Tag                                  Sire                                  DOB**  
**41      170051                                  Anden 150277                                  27/05/2017**

Dam: Anden 150007      SOD: Anden 130069

BWT	WWT	PWWT	PFAT	PEMD	CARCASE+	20-20
0.47	9.89	15.84	-0.47	2.11	204.46	113.38

**Pur./Price** .....



**Lot      Tag                                  Sire                                  DOB**  
**42      170142                                  Farrer 150183                                  24/06/2017**

Dam: Anden 120428      SOD: Anden 110370

BWT	WWT	PWWT	PFAT	PEMD	CARCASE+	20-20
0.36	10.09	15.96	-0.60	2.83	213.99	114.75

**Pur./Price** .....





# SPECIALLY SELECTED ANDEN WHITE SUFFOLK STUD RAMS

**Lot Tag Sire DOB**  
**43 170185 tw Farrer 150183 2/08/2017**

Dam: Anden 160106 SOD: Anden 130041

BWT	WWT	PWWT	PFAT	PEMD	CARCASE+	20-20
0.34	12.49	19.38	-0.68	2.40	227.01	117.19

**Pur./Price** .....



**Lot Tag Sire DOB**  
**44 170148 tw Farrer 150183 16/07/2017**

Dam: Anden 150123 SOD: Anden 130288

BWT	WWT	PWWT	PFAT	PEMD	CARCASE+	20-20
0.34	13.55	21.43	-0.83	1.95	232.12	118.29

**Pur./Price** .....



## SPECIALLY SELECTED ANDEN WHITE SUFFOLK STUD RAMS

**Lot      Tag                          Sire                          DOB**  
**45    170284 tw                      Anden 160177              16/08/2017**

Dam: Anden 160078    SOD: Farrer 140188

BWT	WWT	PWWT	PFAT	PEMD	CARCASE+	20-20
0.34	10.98	17.56	-0.76	1.31	205.01	114.49

**Pur./Price** .....



**Lot      Tag                          Sire                          DOB**  
**46    170150                      Bundara Downs 122261              17/07/2017**

Dam: Anden 130021    SOD: Burwood 110959

BWT	WWT	PWWT	PFAT	PEMD	CARCASE+	20-20
0.52	11.68	18.01	-0.18	2.29	217.04	114.37

**Pur./Price** .....



# SPECIALLY SELECTED ANDEN WHITE SUFFOLK STUD RAMS

**Lot Tag Sire DOB**  
**47 170062 tw Farrer 150183 28/05/2017**

Dam: Anden 150201 SOD: Anden 140298

BWT	WWT	PWWT	PFAT	PEMD	CARCASE+	20-20
0.18	10.62	16.67	-0.30	2.53	213.13	115.25

**Pur./Price .....**



**Lot Tag Sire DOB**  
**48 170144 tw Bundara Downs 122261 14/07/2017**

Dam: Anden 150096 SOD: Anden 130288

BWT	WWT	PWWT	PFAT	PEMD	CARCASE+	20-20
0.35	13.11	20.06	-0.69	1.37	219.07	115.11

**Pur./Price .....**



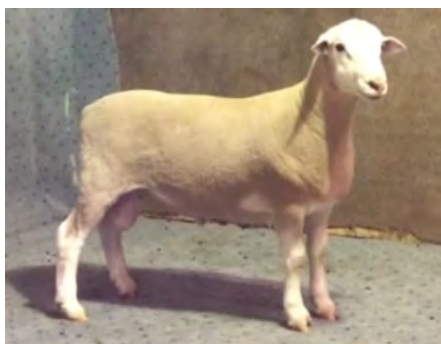
# SPECIALLY SELECTED ANDEN WHITE SUFFOLK STUD RAMS

**Lot Tag Sire DOB**  
**49 170106 tw Detpa Grove 150576 11/06/2017**

Dam: Anden 150317 SOD: Anden 140309

BWT	WWT	PWWT	PFAT	PEMD	CARCASE+	20-20
0.24	11.06	17.75	-0.74	1.83	211.76	114.97

**Pur./Price .....**



**Lot Tag Sire DOB**  
**50 170238 Farrer 150183 8/08/2017**

Dam: Anden 140127 SOD: Anden 130288

BWT	WWT	PWWT	PFAT	PEMD	CARCASE+	20-20
0.28	11.90	18.83	-0.80	2.45	224.72	116.36

**Pur./Price .....**



# SPECIALLY SELECTED ANDEN WHITE SUFFOLK STUD RAMS

**Lot**      **Tag**                                      **Sire**                                      **DOB**  
**51**      **170171**                                      **Farrer 150183**                                      **2/08/2017**

Dam: Anden 160032      SOD: Anden 140298

BWT	WWT	PWWT	PFAT	PEMD	CARCASE+	20-20
0.41	12.31	18.99	-0.86	2.60	228.26	117.16

**Pur./Price** .....



**Lot**      **Tag**                                      **Sire**                                      **DOB**  
**52**      **170038 tw**                                      **Anden 150277**                                      **24/05/2017**

Dam: Anden 150086      SOD: Anden 130041

BWT	WWT	PWWT	PFAT	PEMD	CARCASE+	20-20
0.45	10.82	16.26	-0.17	1.61	201.13	113.51

**Pur./Price** .....



# SPECIALLY SELECTED ANDEN WHITE SUFFOLK STUD RAMS

**Lot Tag Sire DOB**  
**53 170006 tr Anden 150277 22/05/2017**

Dam: Anden 140036 SOD: Anden 130288

BWT	WWT	PWWT	PFAT	PEMD	CARCASE+	20-20
0.58	10.29	14.94	-0.47	1.40	194.05	112.59

**Pur./Price** .....



**Lot Tag Sire DOB**  
**54 170320 tr Detpa Grove 150576 18/08/2017**

Dam: Anden 130198 SOD: Burwood 110959

BWT	WWT	PWWT	PFAT	PEMD	CARCASE+	20-20
0.33	9.85	16.05	-0.03	1.85	200.29	112.39

**Pur./Price** .....



# SPECIALLY SELECTED ANDEN WHITE SUFFOLK STUD RAMS

**Lot**    **Tag**                      **Sire**                      **DOB**  
**55**    **170070 tw**                      **Farrer 150049**                      **29/05/2017**

Dam: Anden 140332    SOD: Anden 130288

BWT	WWT	PWWT	PFAT	PEMD	CARCASE+	20-20
0.42	10.89	17.44	-0.05	1.82	207.32	116.50

**Pur./Price** .....



**Lot**    **Tag**                      **Sire**                      **DOB**  
**56**    **170021 tw**                      **Anden 130041**                      **22/05/2017**

Dam: Anden 120254    SOD: Anden 110370

BWT	WWT	PWWT	PFAT	PEMD	CARCASE+	20-20
0.14	8.81	15.04	-0.36	1.89	196.15	112.42

**Pur./Price** .....



# SPECIALLY SELECTED ANDEN WHITE SUFFOLK STUD RAMS

**Lot Tag Sire DOB**  
**57 170137 tw Detpa Grove 150576 21/06/2017**

Dam: Anden 140114 SOD: Anden 130041

BWT	WWT	PWWT	PFAT	PEMD	CARCASE+	20-20
0.23	9.21	15.20	-0.25	1.90	197.28	112.56

**Pur./Price .....**



**Lot Tag Sire DOB**  
**58 170289 tw Farrer 150183 16/08/2017**

Dam: Anden 120170 SOD: Anden 090206

BWT	WWT	PWWT	PFAT	PEMD	CARCASE+	20-20
0.42	10.93	16.97	-0.24	2.48	214.06	115.70

**Pur./Price .....**





# SPECIALLY SELECTED ANDEN WHITE SUFFOLK STUD RAMS

**Lot Tag Sire DOB**  
**59 170003 tw Anden 150277 21/05/2017**

Dam: Anden 150073 SOD: Anden 130041

BWT	WWT	PWWT	PFAT	PEMD	CARCASE+	20-20
0.47	10.70	16.55	-0.20	1.68	202.74	113.15

**Pur./Price** .....



**Lot Tag Sire DOB**  
**60 170028 tw Anden 130041 23/05/2017**

Dam: Anden 150294 SOD: Kurralea 130305

BWT	WWT	PWWT	PFAT	PEMD	CARCASE+	20-20
0.12	9.30	15.00	-0.14	2.68	205.32	114.58

**Pur./Price** .....



# SPECIALLY SELECTED ANDEN WHITE SUFFOLK STUD RAMS

**Lot Tag Sire DOB**  
**61 170228 tr Farrer 150183 6/08/2017**

Dam: Anden 130279 SOD: Pollambi 110451

BWT	WWT	PWWT	PFAT	PEMD	CARCASE+	20-20
0.08	11.28	17.68	-0.47	2.03	213.15	116.37

**Pur./Price** .....



**Lot Tag Sire DOB**  
**62 170143 tw Bundara Downs 122261 14/07/2017**

Dam: Anden 150096 SOD: Anden 130288

BWT	WWT	PWWT	PFAT	PEMD	CARCASE+	20-20
0.35	12.49	19.44	-0.41	1.17	212.07	114.68

**Pur./Price** .....



# 48 WHITE SUFFOLK FLOCK RAMS

**Lot**      **Tag**                      **Sire**                      **DOB**  
 63      170065      Langley Heights 090160      28/05/2017

BWT	WWT	PWWT	PFAT	PEMD	Carcase+	20-20
0.39	10.22	16.62	-0.58	1.19	197.93	113.15

Dam: Anden 120358

PUR./PRICE .....

64      170063 tw      Farrer 150183                      28/05/2017

BWT	WWT	PWWT	PFAT	PEMD	Carcase+	20-20
0.26	11.12	17.65	-0.29	2.45	216.73	115.85

Dam: Anden 150201

PUR./PRICE .....

65      170071 tw      Farrer 150183                      29/05/2017

BWT	WWT	PWWT	PFAT	PEMD	Carcase+	20-20
0.28	10.96	17.83	-0.53	2.52	218.79	115.99

Dam: Anden 140152

PUR./PRICE .....



*Anden White Suffolks winning the Lamb Production Class for Trade and the Lamb Production Class for Export at the 2015 Royal Adelaide Show.*

# ANDEN WHITE SUFFOLK FLOCK RAMS

Lot	Tag	Sire	DOB				
66	170011	Anden 130041	20/05/2017				
<b>BWT</b>	<b>WWT</b>	<b>PWWT</b>	<b>PFAT</b>	<b>PEMD</b>	<b>Carcase+</b>	<b>20-20</b>	
0.24	10.86	16.96	-0.66	1.48	204.22	114.03	
Dam: Anden 140343				<b>PUR./PRICE</b> .....			
67	170085 tw	Farrer 150183	6/06/2017				
<b>BWT</b>	<b>WWT</b>	<b>PWWT</b>	<b>PFAT</b>	<b>PEMD</b>	<b>Carcase+</b>	<b>20-20</b>	
0.39	12.04	18.96	-0.65	2.11	221.13	115.95	
Dam: Anden 130174				<b>PUR./PRICE</b> .....			
68	170037	Anden 150277	24/05/2017				
<b>BWT</b>	<b>WWT</b>	<b>PWWT</b>	<b>PFAT</b>	<b>PEMD</b>	<b>Carcase+</b>	<b>20-20</b>	
0.33	10.19	15.86	-0.38	1.55	198.49	113.41	
Dam: Anden 140279				<b>PUR./PRICE</b> .....			
69	170013	Farrer 150183	22/05/2017				
<b>BWT</b>	<b>WWT</b>	<b>PWWT</b>	<b>PFAT</b>	<b>PEMD</b>	<b>Carcase+</b>	<b>20-20</b>	
0.44	11.37	17.80	-0.39	1.85	211.42	114.99	
Dam: Anden 130021				<b>PUR./PRICE</b> .....			
70	170078	Farrer 150049	3/06/2017				
<b>BWT</b>	<b>WWT</b>	<b>PWWT</b>	<b>PFAT</b>	<b>PEMD</b>	<b>Carcase+</b>	<b>20-20</b>	
0.41	10.49	16.21	-0.03	1.37	196.88	113.00	
Dam: Anden 110254				<b>PUR./PRICE</b> .....			
71	170072 tw	Farrer 150183	29/05/2017				
<b>BWT</b>	<b>WWT</b>	<b>PWWT</b>	<b>PFAT</b>	<b>PEMD</b>	<b>Carcase+</b>	<b>20-20</b>	
0.30	11.19	18.29	-0.50	2.42	219.71	116.11	
Dam: Anden 140152				<b>PUR./PRICE</b> .....			
72	170110 tw	Anden 160061	12/06/2017				
<b>BWT</b>	<b>WWT</b>	<b>PWWT</b>	<b>PFAT</b>	<b>PEMD</b>	<b>Carcase+</b>	<b>20-20</b>	
0.23	11.60	18.27	-0.34	1.52	209.57	114.75	
Dam: Anden 130039				<b>PUR./PRICE</b> .....			
73	170077 tw	Farrer 150049	3/06/2017				
<b>BWT</b>	<b>WWT</b>	<b>PWWT</b>	<b>PFAT</b>	<b>PEMD</b>	<b>Carcase+</b>	<b>20-20</b>	
0.56	11.04	17.05	-1.10	0.87	199.83	113.37	
Dam: Anden 080280				<b>PUR./PRICE</b> .....			
74	170030	Anden 130041	23/05/2017				
<b>BWT</b>	<b>WWT</b>	<b>PWWT</b>	<b>PFAT</b>	<b>PEMD</b>	<b>Carcase+</b>	<b>20-20</b>	
0.22	8.83	14.08	-0.47	1.95	193.93	113.10	
Dam: Anden 150268				<b>PUR./PRICE</b> .....			

# ANDEN WHITE SUFFOLK FLOCK RAMS

Lot	Tag	Sire	DOB				
75	170090	Farrer 150183	6/06/2017				
<b>BWT</b>	<b>WWT</b>	<b>PWWT</b>	<b>PFAT</b>	<b>PEMD</b>	<b>Carcase+</b>	<b>20-20</b>	
0.25	10.64	16.79	-0.42	2.45	213.10	115.23	
Dam: Anden 150233				<b>PUR./PRICE</b> .....			
76	170241	Farrer 150183	10/08/2017				
<b>BWT</b>	<b>WWT</b>	<b>PWWT</b>	<b>PFAT</b>	<b>PEMD</b>	<b>Carcase+</b>	<b>20-20</b>	
0.03	11.49	18.33	-0.47	3.04	227.51	118.13	
Dam: Anden 150012				<b>PUR./PRICE</b> .....			
77	170274 tr	Farrer 150183	14/08/2017				
<b>BWT</b>	<b>WWT</b>	<b>PWWT</b>	<b>PFAT</b>	<b>PEMD</b>	<b>Carcase+</b>	<b>20-20</b>	
0.38	11.58	17.70	-0.68	2.85	224.19	117.05	
Dam: Anden 120302				<b>PUR./PRICE</b> .....			
78	170086 tr	Farrer 150183	6/06/2017				
<b>BWT</b>	<b>WWT</b>	<b>PWWT</b>	<b>PFAT</b>	<b>PEMD</b>	<b>Carcase+</b>	<b>20-20</b>	
0.10	9.99	16.14	-0.02	2.82	211.97	115.11	
Dam: Anden 150091				<b>PUR./PRICE</b> .....			
79	170032	Anden 130041	23/05/2017				
<b>BWT</b>	<b>WWT</b>	<b>PWWT</b>	<b>PFAT</b>	<b>PEMD</b>	<b>Carcase+</b>	<b>20-20</b>	
0.05	9.25	15.25	-0.21	2.43	203.43	114.13	
Dam: Anden 150276				<b>PUR./PRICE</b> .....			
80	170226 tw	Farrer 150049	5/08/2017				
<b>BWT</b>	<b>WWT</b>	<b>PWWT</b>	<b>PFAT</b>	<b>PEMD</b>	<b>Carcase+</b>	<b>20-20</b>	
0.49	10.98	17.94	0.01	1.62	206.75	115.10	
Dam: Anden 110104				<b>PUR./PRICE</b> .....			
81	170325 tr	Detpa Grove 150576	19/08/2017				
<b>BWT</b>	<b>WWT</b>	<b>PWWT</b>	<b>PFAT</b>	<b>PEMD</b>	<b>Carcase+</b>	<b>20-20</b>	
0.42	10.20	16.15	-0.59	1.12	195.51	112.82	
Dam: Anden 130379				<b>PUR./PRICE</b> .....			
82	170321 tw	Detpa Grove 150576	19/08/2017				
<b>BWT</b>	<b>WWT</b>	<b>PWWT</b>	<b>PFAT</b>	<b>PEMD</b>	<b>Carcase+</b>	<b>20-20</b>	
0.43	13.15	20.28	-0.68	1.53	221.78	115.09	
Dam: Anden 150122				<b>PUR./PRICE</b> .....			
83	170341	Farrer 150183	20/08/2017				
<b>BWT</b>	<b>WWT</b>	<b>PWWT</b>	<b>PFAT</b>	<b>PEMD</b>	<b>Carcase+</b>	<b>20-20</b>	
0.26	11.75	18.01	-0.54	2.31	218.87	116.01	
Dam: Anden 140214				<b>PUR./PRICE</b> .....			

# ANDEN WHITE SUFFOLK FLOCK RAMS

Lot	Tag	Sire	DOB				
84	170015	Langley Heights 090160	22/05/2017				
<b>BWT</b>	<b>WWT</b>	<b>PWWT</b>	<b>PFAT</b>	<b>PEMD</b>	<b>Carcase+</b>	<b>20-20</b>	
0.31	11.18	18.52	-0.41	1.69	211.76	115.26	
Dam: Anden 150079				<b>PUR./PRICE</b> .....			
85	170073	Detpa Grove 150576	30/05/2017				
<b>BWT</b>	<b>WWT</b>	<b>PWWT</b>	<b>PFAT</b>	<b>PEMD</b>	<b>Carcase+</b>	<b>20-20</b>	
0.37	9.56	15.41	-0.35	1.63	196.18	112.92	
Dam: Anden 140409				<b>PUR./PRICE</b> .....			
86	170019 tw	Anden 150277	22/05/2017				
<b>BWT</b>	<b>WWT</b>	<b>PWWT</b>	<b>PFAT</b>	<b>PEMD</b>	<b>Carcase+</b>	<b>20-20</b>	
0.45	9.69	14.87	-0.46	1.19	190.02	112.07	
Dam: Anden 130026				<b>PUR./PRICE</b> .....			
87	170057 tw	Farrer 150049	27/05/2017				
<b>BWT</b>	<b>WWT</b>	<b>PWWT</b>	<b>PFAT</b>	<b>PEMD</b>	<b>Carcase+</b>	<b>20-20</b>	
0.47	10.91	17.19	-0.25	1.39	202.46	113.74	
Dam: Anden 120300				<b>PUR./PRICE</b> .....			
88	170288	Anden 160177	16/08/2017				
<b>BWT</b>	<b>WWT</b>	<b>PWWT</b>	<b>PFAT</b>	<b>PEMD</b>	<b>Carcase+</b>	<b>20-20</b>	
0.24	11.39	18.20	-0.62	1.70	212.11	115.10	
Dam: Anden 160064				<b>PUR./PRICE</b> .....			
89	170027 tw	Anden 130041	23/05/2017				
<b>BWT</b>	<b>WWT</b>	<b>PWWT</b>	<b>PFAT</b>	<b>PEMD</b>	<b>Carcase+</b>	<b>20-20</b>	
0.30	10.38	16.50	-0.55	1.79	204.51	114.06	
Dam: Anden 150294				<b>PUR./PRICE</b> .....			
90	170025	Farrer 150049	23/05/2017				
<b>BWT</b>	<b>WWT</b>	<b>PWWT</b>	<b>PFAT</b>	<b>PEMD</b>	<b>Carcase+</b>	<b>20-20</b>	
0.25	8.45	13.64	0.54	2.09	189.01	111.97	
Dam: Burwood 122399				<b>PUR./PRICE</b> .....			
91	170338 tw	Farrer 150183	20/08/2017				
<b>BWT</b>	<b>WWT</b>	<b>PWWT</b>	<b>PFAT</b>	<b>PEMD</b>	<b>Carcase+</b>	<b>20-20</b>	
0.34	11.65	18.06	-0.68	2.68	223.62	116.63	
Dam: Anden 150127				<b>PUR./PRICE</b> .....			
92	170108 tw	Farrer 150049	11/06/2017				
<b>BWT</b>	<b>WWT</b>	<b>PWWT</b>	<b>PFAT</b>	<b>PEMD</b>	<b>Carcase+</b>	<b>20-20</b>	
0.40	10.49	16.19	-0.49	1.54	200.67	113.52	
Dam: Anden 150023				<b>PUR./PRICE</b> .....			

# ANDEN WHITE SUFFOLK FLOCK RAMS

Lot	Tag	Sire	DOB			
93	170117 tw	Farrer 150049	16/06/2017			
<b>BWT</b>	<b>WWT</b>	<b>PWWT</b>	<b>PFAT</b>	<b>PEMD</b>	<b>Carcase+</b>	<b>20-20</b>
0.45	10.43	16.25	-0.27	2.07	205.79	114.20
Dam: Anden 150315				<b>PUR./PRICE</b> .....		
94	170332 tr	Detpa Grove 150576	19/08/2017			
<b>BWT</b>	<b>WWT</b>	<b>PWWT</b>	<b>PFAT</b>	<b>PEMD</b>	<b>Carcase+</b>	<b>20-20</b>
0.23	9.29	14.71	-0.13	2.99	207.73	112.69
Dam: Anden 150192				<b>PUR./PRICE</b> .....		
95	170133 tw	Detpa Grove 150576	20/06/2017			
<b>BWT</b>	<b>WWT</b>	<b>PWWT</b>	<b>PFAT</b>	<b>PEMD</b>	<b>Carcase+</b>	<b>20-20</b>
0.29	9.04	14.91	-0.59	1.25	189.82	112.07
Dam: Anden 140336				<b>PUR./PRICE</b> .....		
96	170007 tr	Anden 150277	22/05/2017			
<b>BWT</b>	<b>WWT</b>	<b>PWWT</b>	<b>PFAT</b>	<b>PEMD</b>	<b>Carcase+</b>	<b>20-20</b>
0.64	11.00	16.00	-0.61	1.33	199.16	113.26
Dam: Anden 140036				<b>PUR./PRICE</b> .....		
97	170130	Detpa Grove 150576	20/06/2017			
<b>BWT</b>	<b>WWT</b>	<b>PWWT</b>	<b>PFAT</b>	<b>PEMD</b>	<b>Carcase+</b>	<b>20-20</b>
0.15	7.92	13.42	0.24	2.39	191.68	112.36
Dam: Anden 150211				<b>PUR./PRICE</b> .....		
98	170080 tw	Farrer 150049	4/06/2017			
<b>BWT</b>	<b>WWT</b>	<b>PWWT</b>	<b>PFAT</b>	<b>PEMD</b>	<b>Carcase+</b>	<b>20-20</b>
0.40	10.41	16.50	0.03	1.89	203.35	113.88
Dam: Anden 130376				<b>PUR./PRICE</b> .....		
99	170402	Farrer 150183	4/08/2017			
<b>BWT</b>	<b>WWT</b>	<b>PWWT</b>	<b>PFAT</b>	<b>PEMD</b>	<b>Carcase+</b>	<b>20-20</b>
0.30	11.39	17.87	-0.56	2.46	219.45	116.07
Dam: Anden 160049				<b>PUR./PRICE</b> .....		
100	170301 tw	Farrer 150183	18/08/2017			
<b>BWT</b>	<b>WWT</b>	<b>PWWT</b>	<b>PFAT</b>	<b>PEMD</b>	<b>Carcase+</b>	<b>20-20</b>
0.29	9.90	15.93	0.20	2.62	207.77	114.50
Dam: Anden 150049				<b>PUR./PRICE</b> .....		
101	170105	Farrer 150049	11/06/2017			
<b>BWT</b>	<b>WWT</b>	<b>PWWT</b>	<b>PFAT</b>	<b>PEMD</b>	<b>Carcase+</b>	<b>20-20</b>
0.52	11.25	17.07	-0.42	1.29	202.37	113.72
Dam: Anden 130127				<b>PUR./PRICE</b> .....		

# ANDEN WHITE SUFFOLK FLOCK RAMS

Lot	Tag		Sire		DOB		
102	170017		Farrer 150049		22/05/2017		
<b>BWT</b>	<b>WWT</b>	<b>PWWT</b>	<b>PFAT</b>	<b>PEMD</b>	<b>Carcase+</b>	<b>20-20</b>	
0.14	7.46	11.41	-0.02	1.57	175.26	110.14	
Dam: Burwood 121135			<b>PUR./PRICE</b> .....				
103	170283	tw	Anden 160177		16/08/2017		
<b>BWT</b>	<b>WWT</b>	<b>PWWT</b>	<b>PFAT</b>	<b>PEMD</b>	<b>Carcase+</b>	<b>20-20</b>	
0.32	11.57	18.72	-0.37	2.01	216.91	115.73	
Dam: Anden 160078			<b>PUR./PRICE</b> .....				
104	170203	tw	Farrer 150183		4/08/2017		
<b>BWT</b>	<b>WWT</b>	<b>PWWT</b>	<b>PFAT</b>	<b>PEMD</b>	<b>Carcase+</b>	<b>20-20</b>	
0.23	10.52	17.11	-0.13	2.94	218.42	115.95	
Dam: Anden 160102			<b>PUR./PRICE</b> .....				
105	170273	tr	Farrer 150183		14/08/2017		
<b>BWT</b>	<b>WWT</b>	<b>PWWT</b>	<b>PFAT</b>	<b>PEMD</b>	<b>Carcase+</b>	<b>20-20</b>	
0.45	11.22	17.19	-0.79	2.31	215.90	115.56	
Dam: Anden 120302			<b>PUR./PRICE</b> .....				
106	170346		Detpa Grove 150576		21/08/2017		
<b>BWT</b>	<b>WWT</b>	<b>PWWT</b>	<b>PFAT</b>	<b>PEMD</b>	<b>Carcase+</b>	<b>20-20</b>	
0.32	11.03	17.41	-0.75	1.48	206.52	114.32	
Dam: Anden 150223			<b>PUR./PRICE</b> .....				
107	170138	tw	Farrer 150183		22/06/2017		
<b>BWT</b>	<b>WWT</b>	<b>PWWT</b>	<b>PFAT</b>	<b>PEMD</b>	<b>Carcase+</b>	<b>20-20</b>	
0.08	8.51	14.45	0.04	2.84	202.62	113.85	
Dam: Anden 140262			<b>PUR./PRICE</b> .....				
108	170356	tr	Farrer 150049		21/08/2017		
<b>BWT</b>	<b>WWT</b>	<b>PWWT</b>	<b>PFAT</b>	<b>PEMD</b>	<b>Carcase+</b>	<b>20-20</b>	
0.33	9.36	14.70	-0.03	1.99	196.04	112.91	
Dam: Anden 120049			<b>PUR./PRICE</b> .....				
109	170141	tw	Detpa Grove 150576		24/06/2017		
<b>BWT</b>	<b>WWT</b>	<b>PWWT</b>	<b>PFAT</b>	<b>PEMD</b>	<b>Carcase+</b>	<b>20-20</b>	
0.40	8.19	13.87	-0.23	1.00	179.87	110.71	
Dam: Anden 110258			<b>PUR./PRICE</b> .....				
110	170175	tw	Farrer 150183		2/08/2017		
<b>BWT</b>	<b>WWT</b>	<b>PWWT</b>	<b>PFAT</b>	<b>PEMD</b>	<b>Carcase+</b>	<b>20-20</b>	
0.44	12.90	19.93	-0.79	1.20	216.70	115.73	
Dam: Anden 160001			<b>PUR./PRICE</b> .....				



# 60 ULTRA WHITE / EASYCARE RAMS

Lot	Tag	Sire	DOB				
111	170746 tw	Hillcroft Farms 148303	28/05/2017				
<b>BWT</b>	<b>WWT</b>	<b>PWWT</b>	<b>PFAT</b>	<b>PEMD</b>	<b>Carcase+</b>	<b>20-20</b>	
0.29	9.78	15.07	-0.66	1.59	196.36	112.96	
Dam: Anden 120003				<b>PUR./PRICE</b> .....			
112	170654 tw	Hillcroft Farms 148303	24/05/2017				
<b>BWT</b>	<b>WWT</b>	<b>PWWT</b>	<b>PFAT</b>	<b>PEMD</b>	<b>Carcase+</b>	<b>20-20</b>	
0.24	8.28	12.37	-1.07	2.38	193.99	112.65	
Dam: Viewdale PD 130771				<b>PUR./PRICE</b> .....			
113	170635	Hillcroft Farms 148303	23/05/2017				
<b>BWT</b>	<b>WWT</b>	<b>PWWT</b>	<b>PFAT</b>	<b>PEMD</b>	<b>Carcase+</b>	<b>20-20</b>	
0.10	9.25	13.80	-0.80	1.44	189.49	112.07	
Dam: Anden 130825				<b>PUR./PRICE</b> .....			
114	170625	Hillcroft Farms 148303	23/05/2017				
<b>BWT</b>	<b>WWT</b>	<b>PWWT</b>	<b>PFAT</b>	<b>PEMD</b>	<b>Carcase+</b>	<b>20-20</b>	
0.10	8.77	12.84	-0.29	2.00	189.34	112.05	
Dam: Anden 130812				<b>PUR./PRICE</b> .....			
115	170699	Hillcroft Farms 148303	25/05/2017				
<b>BWT</b>	<b>WWT</b>	<b>PWWT</b>	<b>PFAT</b>	<b>PEMD</b>	<b>Carcase+</b>	<b>20-20</b>	
-0.01	6.91	10.24	-0.22	2.08	176.50	110.34	
Dam: Anden 120049				<b>PUR./PRICE</b> .....			
116	170617 tw	Hillcroft Farms 167470	22/05/2017				
<b>BWT</b>	<b>WWT</b>	<b>PWWT</b>	<b>PFAT</b>	<b>PEMD</b>	<b>Carcase+</b>	<b>20-20</b>	
0.07	7.83	11.68	0.33	0.96	168.71	109.27	
Dam: Hillcroft Farms 148097				<b>PUR./PRICE</b> .....			
117	170644	Hillcroft Farms 148303	24/05/2017				
<b>BWT</b>	<b>WWT</b>	<b>PWWT</b>	<b>PFAT</b>	<b>PEMD</b>	<b>Carcase+</b>	<b>20-20</b>	
0.19	7.90	12.08	-0.66	2.90	196.40	112.98	
Dam: Viewdale PD 120061				<b>PUR./PRICE</b> .....			
118	170745 tw	Hillcroft Farms 148303	28/05/2017				
<b>BWT</b>	<b>WWT</b>	<b>PWWT</b>	<b>PFAT</b>	<b>PEMD</b>	<b>Carcase+</b>	<b>20-20</b>	
0.35	9.42	14.37	-0.76	1.32	190.29	112.12	
Dam: Anden 120003				<b>PUR./PRICE</b> .....			
119	170723 tw	Hillcroft Farms 148303	27/05/2017				
<b>BWT</b>	<b>WWT</b>	<b>PWWT</b>	<b>PFAT</b>	<b>PEMD</b>	<b>Carcase+</b>	<b>20-20</b>	
-0.07	7.00	10.45	-0.04	3.02	187.43	111.83	
Dam: Anden 120068				<b>PUR./PRICE</b> .....			

# ANDEN ULTRA WHITE/EASYCARE RAMS

Lot	Tag	Sire	DOB			
120	170711 tw	Hillcroft Farms 148303	26/05/2017			
<b>BWT</b>	<b>WWT</b>	<b>PWWT</b>	<b>PFAT</b>	<b>PEMD</b>	<b>Carcase+</b>	<b>20-20</b>
0.24	9.01	13.87	-0.57	1.92	193.69	112.61
Dam: Anden 130822				<b>PUR./PRICE</b> .....		
121	170704	Hillcroft Farms 148303	25/05/2017			
<b>BWT</b>	<b>WWT</b>	<b>PWWT</b>	<b>PFAT</b>	<b>PEMD</b>	<b>Carcase+</b>	<b>20-20</b>
0.12	4.84	6.75	-0.58	0.52	143.13	105.80
Dam: Viewdale PD 130652				<b>PUR./PRICE</b> .....		
122	170721 tw	Anden 160823	26/05/2017			
<b>BWT</b>	<b>WWT</b>	<b>PWWT</b>	<b>PFAT</b>	<b>PEMD</b>	<b>Carcase+</b>	<b>20-20</b>
0.02	8.59	13.85	-0.74	0.66	179.00	110.67
Dam: Anden 150866				<b>PUR./PRICE</b> .....		
123	170658 tw	Hillcroft Farms 148303	24/05/2017			
<b>BWT</b>	<b>WWT</b>	<b>PWWT</b>	<b>PFAT</b>	<b>PEMD</b>	<b>Carcase+</b>	<b>20-20</b>
0.34	9.23	14.08	-0.79	2.47	202.09	113.72
Dam: Viewdale PD 140739				<b>PUR./PRICE</b> .....		
124	170725 tw	Hillcroft Farms 148303	27/05/2017			
<b>BWT</b>	<b>WWT</b>	<b>PWWT</b>	<b>PFAT</b>	<b>PEMD</b>	<b>Carcase+</b>	<b>20-20</b>
0.12	8.99	13.86	-0.83	1.26	187.12	111.75
Dam: Anden 130840				<b>PUR./PRICE</b> .....		
125	170642	Anden 160823	24/05/2017			
<b>BWT</b>	<b>WWT</b>	<b>PWWT</b>	<b>PFAT</b>	<b>PEMD</b>	<b>Carcase+</b>	<b>20-20</b>
-0.07	7.35	11.61	0.40	1.11	168.75	109.30
Dam: Anden 140627				<b>PUR./PRICE</b> .....		
126	170730	Hillcroft Farms 148303	27/05/2017			
<b>BWT</b>	<b>WWT</b>	<b>PWWT</b>	<b>PFAT</b>	<b>PEMD</b>	<b>Carcase+</b>	<b>20-20</b>
0.16	6.82	9.90	-0.46	1.99	175.01	110.10
Dam: Anden 150641				<b>PUR./PRICE</b> .....		
127	170681 tw	Hillcroft Farms 148303	24/05/2017			
<b>BWT</b>	<b>WWT</b>	<b>PWWT</b>	<b>PFAT</b>	<b>PEMD</b>	<b>Carcase+</b>	<b>20-20</b>
0.04	7.81	11.33	-0.73	1.90	182.40	111.12
Dam: Anden 120062				<b>PUR./PRICE</b> .....		
128	170692	Hillcroft Farms 148303	25/05/2017			
<b>BWT</b>	<b>WWT</b>	<b>PWWT</b>	<b>PFAT</b>	<b>PEMD</b>	<b>Carcase+</b>	<b>20-20</b>
0.13	6.08	8.94	-0.28	1.77	166.71	108.99
				<b>PUR./PRICE</b> .....		

# ANDEN ULTRA WHITE/EASYCARE RAMS

Lot	Tag	Sire	DOB				
129	170602	Anden 160823	21/05/2017				
<b>BWT</b>	<b>WWT</b>	<b>PWWT</b>	<b>PFAT</b>	<b>PEMD</b>	<b>Carcase+</b>	<b>20-20</b>	
0.00	8.40	13.58	-0.18	0.42	172.60	109.81	
Dam: Anden 150824				<b>PUR./PRICE</b> .....			
130	170790 tw	Anden 160930	1/08/2017				
<b>BWT</b>	<b>WWT</b>	<b>PWWT</b>	<b>PFAT</b>	<b>PEMD</b>	<b>Carcase+</b>	<b>20-20</b>	
0.12	8.09	12.00	-0.77	0.23	166.53	108.96	
Dam: Anden 120107				<b>PUR./PRICE</b> .....			
131	170657	Hillcroft Farms 148303	24/05/2017				
<b>BWT</b>	<b>WWT</b>	<b>PWWT</b>	<b>PFAT</b>	<b>PEMD</b>	<b>Carcase+</b>	<b>20-20</b>	
0.14	8.22	12.19	-0.59	2.70	194.99	112.80	
Dam: Viewdale PD 140720				<b>PUR./PRICE</b> .....			
132	170895						
<b>BWT</b>	<b>WWT</b>	<b>PWWT</b>	<b>PFAT</b>	<b>PEMD</b>	<b>Carcase+</b>	<b>20-20</b>	
				<b>PUR./PRICE</b> .....			
133	170622 tr	Hillcroft Farms 148303	22/05/2017				
<b>BWT</b>	<b>WWT</b>	<b>PWWT</b>	<b>PFAT</b>	<b>PEMD</b>	<b>Carcase+</b>	<b>20-20</b>	
0.29	8.09	11.97	-0.68	2.74	194.75	112.74	
Dam: Viewdale PD 130635				<b>PUR./PRICE</b> .....			
134	170650	Hillcroft Farms 148303	24/05/2017				
<b>BWT</b>	<b>WWT</b>	<b>PWWT</b>	<b>PFAT</b>	<b>PEMD</b>	<b>Carcase+</b>	<b>20-20</b>	
0.28	8.91	13.32	-0.62	2.18	194.77	112.75	
Dam: Viewdale PD 150613				<b>PUR./PRICE</b> .....			
135	170727	Hillcroft Farms 148303	27/05/2017				
<b>BWT</b>	<b>WWT</b>	<b>PWWT</b>	<b>PFAT</b>	<b>PEMD</b>	<b>Carcase+</b>	<b>20-20</b>	
0.05	6.11	8.92	-0.20	2.42	173.79	109.96	
Dam: Anden 150655				<b>PUR./PRICE</b> .....			
136	170719	Anden 160823	26/05/2017				
<b>BWT</b>	<b>WWT</b>	<b>PWWT</b>	<b>PFAT</b>	<b>PEMD</b>	<b>Carcase+</b>	<b>20-20</b>	
-0.10	6.33	9.97	-0.60	0.92	162.50	108.47	
Dam: Anden 150841				<b>PUR./PRICE</b> .....			
137	170859 tw	Anden 160930	22/08/2017				
<b>BWT</b>	<b>WWT</b>	<b>PWWT</b>	<b>PFAT</b>	<b>PEMD</b>	<b>Carcase+</b>	<b>20-20</b>	
0.07	8.97	13.96	-0.78	0.11	174.15	110.00	
Dam: Anden 140653				<b>PUR./PRICE</b> .....			

# ANDEN ULTRA WHITE/EASYCARE RAMS

Lot	Tag	Sire	DOB				
138	170659 tw	Hillcroft Farms 148303	24/05/2017				
<b>BWT</b>	<b>WWT</b>	<b>PWWT</b>	<b>PFAT</b>	<b>PEMD</b>	<b>Carcase+</b>	<b>20-20</b>	
0.20	7.96	12.31	-0.72	2.55	193.58	112.60	
Dam: Viewdale PD 140739				<b>PUR./PRICE</b> .....			
139	170707 tw	Hillcroft Farms 148303	25/05/2017				
<b>BWT</b>	<b>WWT</b>	<b>PWWT</b>	<b>PFAT</b>	<b>PEMD</b>	<b>Carcase+</b>	<b>20-20</b>	
0.25	8.10	12.51	-0.78	2.32	192.25	112.41	
Dam: Viewdale PD 140749				<b>PUR./PRICE</b> .....			
140	170756 tw	Anden 150840	10/06/2017				
<b>BWT</b>	<b>WWT</b>	<b>PWWT</b>	<b>PFAT</b>	<b>PEMD</b>	<b>Carcase+</b>	<b>20-20</b>	
0.09	7.30	11.16	-0.89	1.59	177.84	110.50	
Dam: Viewdale PD 130730				<b>PUR./PRICE</b> .....			
141	170815 tw	Anden 160930	4/08/2017				
<b>BWT</b>	<b>WWT</b>	<b>PWWT</b>	<b>PFAT</b>	<b>PEMD</b>	<b>Carcase+</b>	<b>20-20</b>	
-0.14	6.62	10.47	-0.30	1.02	164.97	108.81	
Dam: Anden 160814				<b>PUR./PRICE</b> .....			
142	170819	Hillcroft Farms 167595	4/08/2017				
<b>BWT</b>	<b>WWT</b>	<b>PWWT</b>	<b>PFAT</b>	<b>PEMD</b>	<b>Carcase+</b>	<b>20-20</b>	
-0.14	7.31	11.86	0.56	1.19	169.78	109.46	
Dam: Anden 160824				<b>PUR./PRICE</b> .....			
143	170678	Hillcroft Farms 148303	24/05/2017				
<b>BWT</b>	<b>WWT</b>	<b>PWWT</b>	<b>PFAT</b>	<b>PEMD</b>	<b>Carcase+</b>	<b>20-20</b>	
0.15	8.39	13.07	-0.56	2.19	192.48	112.46	
Dam: Anden 130822				<b>PUR./PRICE</b> .....			
144	170855 tw	Anden 150840	20/08/2017				
<b>BWT</b>	<b>WWT</b>	<b>PWWT</b>	<b>PFAT</b>	<b>PEMD</b>	<b>Carcase+</b>	<b>20-20</b>	
0.16	8.46	12.80	-0.30	1.70	185.08	111.46	
Dam: Viewdale PD 150654				<b>PUR./PRICE</b> .....			
145	170634 tw	Anden 160823	23/05/2017				
<b>BWT</b>	<b>WWT</b>	<b>PWWT</b>	<b>PFAT</b>	<b>PEMD</b>	<b>Carcase+</b>	<b>20-20</b>	
-0.17	7.64	12.17	-0.47	1.16	175.51	110.24	
Dam: Anden 150828				<b>PUR./PRICE</b> .....			
146	170648 tw	Hillcroft Farms 148303	24/05/2017				
<b>BWT</b>	<b>WWT</b>	<b>PWWT</b>	<b>PFAT</b>	<b>PEMD</b>	<b>Carcase+</b>	<b>20-20</b>	
0.16	8.31	12.65	-0.43	2.65	195.57	112.88	
Dam: Viewdale PD 150610				<b>PUR./PRICE</b> .....			

# ANDEN ULTRA WHITE/EASYCARE RAMS

Lot	Tag	Sire	DOB				
147	170744 tw	Anden 160823	28/05/2017				
<b>BWT</b>	<b>WWT</b>	<b>PWWT</b>	<b>PFAT</b>	<b>PEMD</b>	<b>Carcase+</b>	<b>20-20</b>	
-0.05	8.61	13.63	0.06	1.00	178.93	110.67	
Dam: Anden 140633				<b>PUR./PRICE</b> .....			
148	170688 tw	Hillcroft Farms 148303	25/05/2017				
<b>BWT</b>	<b>WWT</b>	<b>PWWT</b>	<b>PFAT</b>	<b>PEMD</b>	<b>Carcase+</b>	<b>20-20</b>	
0.10	8.38	12.74	-0.59	2.01	189.39	112.06	
Dam: Anden 120072				<b>PUR./PRICE</b> .....			
149	170726 tw	Hillcroft Farms 148303	27/05/2017				
<b>BWT</b>	<b>WWT</b>	<b>PWWT</b>	<b>PFAT</b>	<b>PEMD</b>	<b>Carcase+</b>	<b>20-20</b>	
0.10	8.96	13.79	-0.95	1.48	189.81	112.11	
Dam: Anden 130840				<b>PUR./PRICE</b> .....			
150	170770 tw	Hillcroft Farms 167595	16/07/2017				
<b>BWT</b>	<b>WWT</b>	<b>PWWT</b>	<b>PFAT</b>	<b>PEMD</b>	<b>Carcase+</b>	<b>20-20</b>	
-0.09	7.49	11.90	0.30	0.60	164.67	108.76	
Dam: Anden 150860				<b>PUR./PRICE</b> .....			
151	170663 tw	Hillcroft Farms 148303	24/05/2017				
<b>BWT</b>	<b>WWT</b>	<b>PWWT</b>	<b>PFAT</b>	<b>PEMD</b>	<b>Carcase+</b>	<b>20-20</b>	
0.06	8.17	12.21	-0.67	1.62	183.01	111.20	
Dam: Anden 130849				<b>PUR./PRICE</b> .....			
152	170668 tw	Hillcroft Farms 148303	24/05/2017				
<b>BWT</b>	<b>WWT</b>	<b>PWWT</b>	<b>PFAT</b>	<b>PEMD</b>	<b>Carcase+</b>	<b>20-20</b>	
0.10	8.98	13.57	-0.83	1.61	190.13	112.16	
Dam: Anden 130825				<b>PUR./PRICE</b> .....			
153	170694	Anden 160823	25/05/2017				
<b>BWT</b>	<b>WWT</b>	<b>PWWT</b>	<b>PFAT</b>	<b>PEMD</b>	<b>Carcase+</b>	<b>20-20</b>	
-0.19	6.64	10.84	-0.46	1.13	168.12	109.24	
Dam: Anden 140622				<b>PUR./PRICE</b> .....			
154	170896						
<b>BWT</b>	<b>WWT</b>	<b>PWWT</b>	<b>PFAT</b>	<b>PEMD</b>	<b>Carcase+</b>	<b>20-20</b>	
				<b>PUR./PRICE</b> .....			
155	170689 tw	Hillcroft Farms 148303	25/05/2017				
<b>BWT</b>	<b>WWT</b>	<b>PWWT</b>	<b>PFAT</b>	<b>PEMD</b>	<b>Carcase+</b>	<b>20-20</b>	
0.09	8.30	12.39	-0.30	1.74	183.76	111.30	
Dam: Anden 120006				<b>PUR./PRICE</b> .....			

# ANDEN ULTRA WHITE/EASYCARE RAMS

Lot	Tag	Sire	DOB				
156	170800 tw	Anden 160930	2/08/2017				
<b>BWT</b>	<b>WWT</b>	<b>PWWT</b>	<b>PFAT</b>	<b>PEMD</b>	<b>Carcase+</b>	<b>20-20</b>	
0.05	7.80	11.92	0.03	1.24	173.88	109.97	
Dam: Anden 160858				<b>PUR./PRICE</b> .....			
157	170676 tw	Hillcroft Farms 167436	24/05/2017				
<b>BWT</b>	<b>WWT</b>	<b>PWWT</b>	<b>PFAT</b>	<b>PEMD</b>	<b>Carcase+</b>	<b>20-20</b>	
0.03	7.49	11.41	-0.17	1.66	177.02	110.40	
Dam: Hillcroft Farms 147434				<b>PUR./PRICE</b> .....			
158	170774 tw	Anden 160930	18/07/2017				
<b>BWT</b>	<b>WWT</b>	<b>PWWT</b>	<b>PFAT</b>	<b>PEMD</b>	<b>Carcase+</b>	<b>20-20</b>	
0.05	8.91	13.51	-0.53	0.57	176.66	110.35	
Dam: Anden 130849				<b>PUR./PRICE</b> .....			
159	170811	Anden 160930	3/08/2017				
<b>BWT</b>	<b>WWT</b>	<b>PWWT</b>	<b>PFAT</b>	<b>PEMD</b>	<b>Carcase+</b>	<b>20-20</b>	
-0.02	7.09	11.44	-0.32	1.06	169.93	109.45	
Dam: Anden 140635				<b>PUR./PRICE</b> .....			
160	170858 tw	Anden 160930	22/08/2017				
<b>BWT</b>	<b>WWT</b>	<b>PWWT</b>	<b>PFAT</b>	<b>PEMD</b>	<b>Carcase+</b>	<b>20-20</b>	
0.09	9.13	14.15	-0.80	0.09	175.02	110.12	
Dam: Anden 140653				<b>PUR./PRICE</b> .....			
161	170640 tw	Hillcroft Farms 148303	24/05/2017				
<b>BWT</b>	<b>WWT</b>	<b>PWWT</b>	<b>PFAT</b>	<b>PEMD</b>	<b>Carcase+</b>	<b>20-20</b>	
0.03	7.97	12.01	-0.30	2.44	189.59	112.10	
Dam: Anden 130838				<b>PUR./PRICE</b> .....			
162	170817	Hillcroft Farms 167595	4/08/2017				
<b>BWT</b>	<b>WWT</b>	<b>PWWT</b>	<b>PFAT</b>	<b>PEMD</b>	<b>Carcase+</b>	<b>20-20</b>	
-0.08	6.61	10.19	0.61	1.16	161.78	108.36	
Dam: Anden 160902				<b>PUR./PRICE</b> .....			
163	170776	Anden 160930	19/07/2017				
<b>BWT</b>	<b>WWT</b>	<b>PWWT</b>	<b>PFAT</b>	<b>PEMD</b>	<b>Carcase+</b>	<b>20-20</b>	
-0.23	6.71	10.60	-0.35	0.67	161.75	108.39	
Dam: Anden 150857				<b>PUR./PRICE</b> .....			
164	170836	Anden 160930	13/08/2017				
<b>BWT</b>	<b>WWT</b>	<b>PWWT</b>	<b>PFAT</b>	<b>PEMD</b>	<b>Carcase+</b>	<b>20-20</b>	
-0.05	7.72	12.66	-0.05	0.93	173.02	109.88	
Dam: Anden 160803				<b>PUR./PRICE</b> .....			

# ANDEN ULTRA WHITE/EASYCARE RAMS

Lot	Tag		Sire	DOB			
165	170761	tr	Anden 160930	12/07/2017			
<b>BWT</b>	<b>WWT</b>	<b>PWWT</b>	<b>PFAT</b>	<b>PEMD</b>	<b>Carcase+</b>	<b>20-20</b>	
0.08	7.73	12.27	-0.51	0.17	164.98	108.76	
Dam: Anden 140606				<b>PUR./PRICE</b> .....			
166	170873	tw	Anden 160930	1/09/2017			
<b>BWT</b>	<b>WWT</b>	<b>PWWT</b>	<b>PFAT</b>	<b>PEMD</b>	<b>Carcase+</b>	<b>20-20</b>	
-0.16	7.56	12.28	0.05	1.10	172.88	109.88	
Dam: Anden 160965				<b>PUR./PRICE</b> .....			
167	170687	tw	Hillcroft Farms 148303	25/05/2017			
<b>BWT</b>	<b>WWT</b>	<b>PWWT</b>	<b>PFAT</b>	<b>PEMD</b>	<b>Carcase+</b>	<b>20-20</b>	
0.10	8.25	12.63	-0.29	2.65	194.80	112.79	
Dam: Anden 120072				<b>PUR./PRICE</b> .....			
168	170667	tw	Hillcroft Farms 167470	24/05/2017			
<b>BWT</b>	<b>WWT</b>	<b>PWWT</b>	<b>PFAT</b>	<b>PEMD</b>	<b>Carcase+</b>	<b>20-20</b>	
0.12	7.84	11.21	0.68	0.58	161.32	108.26	
Dam: Hillcroft Farms 147858				<b>PUR./PRICE</b> .....			
169	170874	tw	Anden 160930	1/09/2017			
<b>BWT</b>	<b>WWT</b>	<b>PWWT</b>	<b>PFAT</b>	<b>PEMD</b>	<b>Carcase+</b>	<b>20-20</b>	
-0.20	7.58	12.24	-0.10	0.78	169.81	109.47	
Dam: Anden 160965				<b>PUR./PRICE</b> .....			
170	170853		Anden 160930	20/08/2017			
<b>BWT</b>	<b>WWT</b>	<b>PWWT</b>	<b>PFAT</b>	<b>PEMD</b>	<b>Carcase+</b>	<b>20-20</b>	
-0.05	8.80	13.49	-0.68	1.04	182.28	111.13	
Dam: Anden 160960				<b>PUR./PRICE</b> .....			

# 33 WHITE SUFFOLK FLOCK RAMS

Lot      Tag                      Sire                                      DOB  
 171      170149 tw      Farrer 150183                      16/07/2017

BWT	WWT	PWWT	PFAT	PEMD	Carcase+	20-20
0.21	11.48	17.75	-0.77	2.14	216.33	115.67

Dam: Anden 150123

PUR./PRICE .....

172      170101 tw      Farrer 150049                      10/06/2017

BWT	WWT	PWWT	PFAT	PEMD	Carcase+	20-20
0.38	10.15	15.91	-0.10	1.45	196.19	112.92

Dam: Anden 120304

PUR./PRICE .....

173      170039 tw      Anden 150277                      24/05/2017

BWT	WWT	PWWT	PFAT	PEMD	Carcase+	20-20
0.39	9.98	15.52	-0.06	1.80	198.37	113.21

Dam: Anden 150086

PUR./PRICE .....



## Anden 9168

Andrew Donnan pictured with sons Trent, Wade, Joel and Kane and Anden 9168, known as 'Smoothie'.

Anden 9168 won Supreme Champion Ram at the 2010 Royal Adelaide Show. He won Junior Champion White Suffolk Ram, Grand Champion White Suffolk Ram, Champion Shortwool Ram of All Breeds and was then judged Supreme Champion Ram of All Breeds.



# ANDEN WHITE SUFFOLK FLOCK RAMS

**Lot Tag Sire DOB**  
 174 170307 qu Farrer 150183 18/08/2017

BWT	WWT	PWWT	PFAT	PEMD	Carcase+	20-20
0.21	9.49	14.97	0.03	3.26	211.53	115.02

Dam: Anden 110295

PUR./PRICE .....

175 170303 qu Farrer 150049 18/08/2017

BWT	WWT	PWWT	PFAT	PEMD	Carcase+	20-20
0.49	9.87	15.29	-0.05	1.42	192.91	112.45

Dam: Anden 120208

PUR./PRICE .....

176 170140 tw Detpa Grove 150576 24/06/2017

BWT	WWT	PWWT	PFAT	PEMD	Carcase+	20-20
0.44	8.36	13.86	-0.39	0.97	180.62	110.80

Dam: Anden 110258

PUR./PRICE .....

177 170247 tw Anden 160224 11/08/2017

BWT	WWT	PWWT	PFAT	PEMD	Carcase+	20-20
0.26	11.42	17.56	-0.74	1.47	207.84	114.51

Dam: Anden 160019

PUR./PRICE .....

178 170387 tw Detpa Grove 150576 29/08/2017

BWT	WWT	PWWT	PFAT	PEMD	Carcase+	20-20
0.27	9.80	15.77	-0.34	1.63	197.94	113.18

Dam: Anden 150004

PUR./PRICE .....

179 170296 tr Detpa Grove 150576 17/08/2017

BWT	WWT	PWWT	PFAT	PEMD	Carcase+	20-20
0.31	8.88	14.27	-0.07	1.82	191.64	112.32

Dam: Anden 110332

PUR./PRICE .....

180 170392 Anden 160177 1/09/2017

BWT	WWT	PWWT	PFAT	PEMD	Carcase+	20-20
0.22	11.27	18.08	-0.74	1.85	213.56	115.30

Dam: Anden 160038

PUR./PRICE .....

181 170234 tw Farrer 150049 7/08/2017

BWT	WWT	PWWT	PFAT	PEMD	Carcase+	20-20
0.28	10.03	15.94	-0.17	2.08	203.50	113.92

Dam: Anden 130031

PUR./PRICE .....

182 170300 tw Farrer 150183 18/08/2017

BWT	WWT	PWWT	PFAT	PEMD	Carcase+	20-20
0.31	10.44	16.60	-0.17	2.64	213.22	115.23

Dam: Anden 150049

PUR./PRICE .....

# ANDEN WHITE SUFFOLK FLOCK RAMS

**Lot Tag Sire DOB**  
 183 170239 tw Anden 160177 9/08/2017

BWT	WWT	PWWT	PFAT	PEMD	Carcase+	20-20
0.20	10.79	16.93	-1.04	1.31	203.55	113.95

Dam: Anden 150051

PUR./PRICE .....

184 170125 tr Detpa Grove 150576 18/06/2017

BWT	WWT	PWWT	PFAT	PEMD	Carcase+	20-20
0.25	9.97	16.07	0.03	2.17	204.01	113.29

Dam: Anden 140273

PUR./PRICE .....

185 170183 tw Bundara Downs 122261 2/08/2017

BWT	WWT	PWWT	PFAT	PEMD	Carcase+	20-20
0.31	11.99	19.26	-0.69	1.43	214.36	113.54

Dam: Anden 160074

PUR./PRICE .....

186 170012 tr Anden 130041 20/05/2017

BWT	WWT	PWWT	PFAT	PEMD	Carcase+	20-20
0.10	9.08	14.52	-0.51	1.24	188.17	111.89

Dam: Anden 120188

PUR./PRICE .....

187 170258 tw Farrer 150049 12/08/2017

BWT	WWT	PWWT	PFAT	PEMD	Carcase+	20-20
0.36	10.16	15.32	-0.34	1.77	198.80	113.27

Dam: Anden 130320

PUR./PRICE .....

188 170319 tr Detpa Grove 150576 18/08/2017

BWT	WWT	PWWT	PFAT	PEMD	Carcase+	20-20
0.44	10.05	15.99	-0.23	1.45	196.80	112.98

Dam: Anden 130198

PUR./PRICE .....

189 170373 Anden 160177 27/08/2017

BWT	WWT	PWWT	PFAT	PEMD	Carcase+	20-20
0.29	11.79	18.54	-0.72	1.75	215.15	115.50

Dam: Anden 160031

PUR./PRICE .....

190 170176 tr Anden 150277 2/08/2017

BWT	WWT	PWWT	PFAT	PEMD	Carcase+	20-20
0.63	10.97	17.69	-0.20	2.05	211.61	114.68

Dam: Anden 160091

PUR./PRICE .....

191 170194 tw Farrer 150183 3/08/2017

BWT	WWT	PWWT	PFAT	PEMD	Carcase+	20-20
0.20	10.17	16.45	-0.20	2.77	213.65	115.31

Dam: Anden 160150

PUR./PRICE .....

# ANDEN WHITE SUFFOLK FLOCK RAMS

Lot	Tag	Sire	DOB			
192	170265 tw	Farrer 150183	13/08/2017			
<b>BWT</b>	<b>WWT</b>	<b>PWWT</b>	<b>PFAT</b>	<b>PEMD</b>	<b>Carcase+</b>	<b>20-20</b>
0.25	10.56	16.92	-0.12	2.55	213.33	115.26
Dam: Anden 150029				<b>PUR./PRICE</b> .....		
193	170155	Anden 150277	18/07/2017			
<b>BWT</b>	<b>WWT</b>	<b>PWWT</b>	<b>PFAT</b>	<b>PEMD</b>	<b>Carcase+</b>	<b>20-20</b>
0.60	11.46	17.81	-0.72	2.11	215.94	115.54
Dam: Anden 140112				<b>PUR./PRICE</b> .....		
194	170109 tw	Farrer 150049	11/06/2017			
<b>BWT</b>	<b>WWT</b>	<b>PWWT</b>	<b>PFAT</b>	<b>PEMD</b>	<b>Carcase+</b>	<b>20-20</b>
0.34	10.99	16.79	-0.40	1.67	204.97	114.11
Dam: Anden 150023				<b>PUR./PRICE</b> .....		
195	170351	Detpa Grove 150576	21/08/2017			
<b>BWT</b>	<b>WWT</b>	<b>PWWT</b>	<b>PFAT</b>	<b>PEMD</b>	<b>Carcase+</b>	<b>20-20</b>
0.34	8.65	14.02	-0.05	1.89	190.96	112.22
Dam: Anden 130292				<b>PUR./PRICE</b> .....		
196	170285 tr	Detpa Grove 150576	16/08/2017			
<b>BWT</b>	<b>WWT</b>	<b>PWWT</b>	<b>PFAT</b>	<b>PEMD</b>	<b>Carcase+</b>	<b>20-20</b>
0.30	8.46	14.30	0.21	2.34	195.53	112.84
Dam: Anden 130381				<b>PUR./PRICE</b> .....		
197	170324 tr	Detpa Grove 150576	19/08/2017			
<b>BWT</b>	<b>WWT</b>	<b>PWWT</b>	<b>PFAT</b>	<b>PEMD</b>	<b>Carcase+</b>	<b>20-20</b>
0.41	9.96	15.90	-0.39	1.34	195.64	112.84
Dam: Anden 130379				<b>PUR./PRICE</b> .....		
198	170362 tr	Farrer 150183	23/08/2017			
<b>BWT</b>	<b>WWT</b>	<b>PWWT</b>	<b>PFAT</b>	<b>PEMD</b>	<b>Carcase+</b>	<b>20-20</b>
0.09	10.75	17.19	-0.29	2.70	217.08	115.80
Dam: Anden 140281				<b>PUR./PRICE</b> .....		
199	170135 tw	Detpa Grove 150576	21/06/2017			
<b>BWT</b>	<b>WWT</b>	<b>PWWT</b>	<b>PFAT</b>	<b>PEMD</b>	<b>Carcase+</b>	<b>20-20</b>
0.35	9.65	15.31	-0.56	1.10	190.87	112.20
Dam: Anden 130336				<b>PUR./PRICE</b> .....		
200	170052 tr	Farrer 150049	27/05/2017			
<b>BWT</b>	<b>WWT</b>	<b>PWWT</b>	<b>PFAT</b>	<b>PEMD</b>	<b>Carcase+</b>	<b>20-20</b>
0.32	9.45	14.90	-0.24	1.29	189.87	112.07
Dam: Anden 130318				<b>PUR./PRICE</b> .....		

# ANDEN WHITE SUFFOLK FLOCK RAMS

Lot	Tag	Sire	DOB
201	170219	Glencraig 150406	4/08/2017

BWT	WWT	PWWT	PFAT	PEMD	Carcase+	20-20
0.65	10.40	16.07	-0.71	0.75	191.88	112.28

Dam: Anden 130060

PUR./PRICE .....

202	170208 tr	Glencraig 150406	4/08/2017
-----	-----------	------------------	-----------

BWT	WWT	PWWT	PFAT	PEMD	Carcase+	20-20
0.67	10.87	16.82	-0.86	0.52	193.56	112.50

Dam: Anden 130338

PUR./PRICE .....

203	170206 tr	Glencraig 150406	4/08/2017
-----	-----------	------------------	-----------

BWT	WWT	PWWT	PFAT	PEMD	Carcase+	20-20
0.58	10.56	16.56	-0.48	1.28	199.04	113.26

Dam: Anden 130338

PUR./PRICE .....

# 12 KERANGIE SUFFOLK RAMS

Lot	Tag	Sire	DOB				
204	170558 tr	Glenraig 150406	5/08/2017				
<b>BWT</b>	<b>WWT</b>	<b>PWWT</b>	<b>PFAT</b>	<b>PEMD</b>	<b>Carcase+</b>	<b>20-20</b>	
0.78	10.50	16.74	-0.71	0.31	189.42	111.92	
Dam: Kerangie 120029				<b>PUR./PRICE</b> .....			
205	170519 tw	Glenraig 150406	12/06/2017				
<b>BWT</b>	<b>WWT</b>	<b>PWWT</b>	<b>PFAT</b>	<b>PEMD</b>	<b>Carcase+</b>	<b>20-20</b>	
0.61	9.40	14.78	-0.50	0.57	182.06	110.96	
Dam: Burwood 120280				<b>PUR./PRICE</b> .....			
206	170501	Lynburn 150247	24/05/2017				
<b>BWT</b>	<b>WWT</b>	<b>PWWT</b>	<b>PFAT</b>	<b>PEMD</b>	<b>Carcase+</b>	<b>20-20</b>	
0.43	8.48	13.97	0.01	0.69	176.50	110.24	
Dam: Kerangie 150546				<b>PUR./PRICE</b> .....			
207	170569	Glenraig 150406	10/08/2017				
<b>BWT</b>	<b>WWT</b>	<b>PWWT</b>	<b>PFAT</b>	<b>PEMD</b>	<b>Carcase+</b>	<b>20-20</b>	
0.52	8.22	13.05	-0.26	0.96	176.75	110.26	
Dam: Kerangie 130541				<b>PUR./PRICE</b> .....			
208	170548	Lynburn 150247	19/07/2017				
<b>BWT</b>	<b>WWT</b>	<b>PWWT</b>	<b>PFAT</b>	<b>PEMD</b>	<b>Carcase+</b>	<b>20-20</b>	
0.37	7.41	12.31	-0.01	1.14	173.40	109.84	
Dam: Kerangie 160501				<b>PUR./PRICE</b> .....			
209	170561 tw	Glenraig 150406	5/08/2017				
<b>BWT</b>	<b>WWT</b>	<b>PWWT</b>	<b>PFAT</b>	<b>PEMD</b>	<b>Carcase+</b>	<b>20-20</b>	
0.44	7.92	13.06	-0.18	1.44	181.25	110.89	
Dam: Kerangie 140533				<b>PUR./PRICE</b> .....			
210	170512 tw	Lynburn 150247	28/05/2017				
<b>BWT</b>	<b>WWT</b>	<b>PWWT</b>	<b>PFAT</b>	<b>PEMD</b>	<b>Carcase+</b>	<b>20-20</b>	
0.40	7.63	12.73	0.02	1.40	178.24	110.49	
Dam: Kerangie 120050				<b>PUR./PRICE</b> .....			
211	170529 tw	Lynburn 150247	16/07/2017				
<b>BWT</b>	<b>WWT</b>	<b>PWWT</b>	<b>PFAT</b>	<b>PEMD</b>	<b>Carcase+</b>	<b>20-20</b>	
0.42	8.50	14.57	0.19	1.12	182.69	111.08	
Dam: Kerangie 150549				<b>PUR./PRICE</b> .....			
212	170542 tw	Oakwood 130019	17/07/2017				
<b>BWT</b>	<b>WWT</b>	<b>PWWT</b>	<b>PFAT</b>	<b>PEMD</b>	<b>Carcase+</b>	<b>20-20</b>	
0.61	9.72	14.27	-0.90	0.27	179.35	110.59	
Dam: Kerangie 140505				<b>PUR./PRICE</b> .....			

# KERANGIE SUFFOLK RAMS

**Lot**      **Tag**                      **Sire**                      **DOB**  
 213      170543 tw      Oakwood 130019      17/07/2017

BWT	WWT	PWWT	PFAT	PEMD	Carcase+	20-20
0.50	8.78	13.33	-0.73	0.40	174.60	109.97

Dam: Kerangie 140505

PUR./PRICE .....

214      170536 tw      Lynburn 150247      17/07/2017

BWT	WWT	PWWT	PFAT	PEMD	Carcase+	20-20
0.27	7.49	13.00	0.00	1.96	185.29	111.47

Dam: Kerangie 150510

PUR./PRICE .....

215      170552 tw      GlenCraig 150406      4/08/2017

BWT	WWT	PWWT	PFAT	PEMD	Carcase+	20-20
0.55	9.36	14.81	-0.46	0.23	178.12	110.44

Dam: Kerangie 150516

PUR./PRICE .....



**Kerangie 150530**

2016 Royal Adelaide Show – Grand Champion Suffolk Ram.

**NATIONAL VENDOR DECLARATION (SHEEP AND LAMBS) AND WAYBILL** S0413 20245534

**Part A - To be completed by the owner or person who is responsible for the husbandry of the sheep or lambs.**

Owner of sheep or lambs **ANDEN STUD**  
 Property/place where the journey commenced **1117 Willangie - Woornelung Rd WILLANGIE** VIC 3485

Property Identification Code (PIC) of this property **3BUET011**  
 This MUST be the PIC of the property that the stock is being moved from

Description of sheep or lambs

Number	Year born	Description	Months of lambing	PICs on Ear Tags/Breeds (provide for the sheep only)	Remarks
105	2017	White Suffolk Rams	Aug		22
29	2017	White Suffolk Ewes	Aug		22
12	2017	Suffolk Rams	Aug		22
9	2017	Suffolk Ewes	Aug		22
60	2017	Vitro White Rams	Aug		22
215	Total				

Have all sheep in this consignment been tagged with an additional pink post breeder tag with the PIC printed on this tag? (or WA brand as listed in the Description table above) Yes  No   
 Have all sheep in this consignment been tagged with an additional pink post breeder tag with the PIC printed on this tag? (or WA brand as listed in the Description table above) Yes  No

Hours off feed and water before transporting **12 hours**  
 Consigned to **Elders**  
 Destination (if different) of sheep or lambs **171 BROADWAY WYCHEPROOF VIC.**

Details of other statutory documents relating to this movement e.g. Health Statement

Have these sheep or lambs been raised consistent with the rules of an independently audited QA program on the property the PIC of which is shown above? Yes  No  If Yes, give details:

Have all the sheep or lambs in this consignment been treated with a Scabby Mouth Vaccination either at marking or at least 34 days prior to their presentation for sale? Yes  No  If Yes, give details:

Were all of these sheep or lambs bred by the owner or vendor? Yes  No  If NO, how long ago were the sheep or lambs obtained or purchased? A. Less than 2 months  B. 2-6 months  C. 6-12 months  D. more than 12 months

Are any of the sheep or lambs in this consignment still within a Withholding Period (WHP) or Export Slaughter Interval (ESI) as set by APVMA or SAFE/AT, following treatment with any veterinary drug or chemical? Yes  No  If Yes, give details: (Record additional details in question 7)

In the past 60 days, have any of the sheep or lambs in this consignment consumed any material that was still within a withholding period when harvested, collected or first grazed? Yes  No  If Yes, give details:

Have the sheep or lambs in this consignment ever in their lives been fed feed containing animal fats? (See Explanatory Notes) Yes  No

Please include any additional information below MATSHEEP Flock accreditation MWS e.g. vaccination programs, animal health certification, additional declarations, etc.

**National Sheep Health Statement - Ovine Brucellosis Free Certificate**

**Declaration**

I, **Andrew Donnan** of **1117 Willangie - Woornelung Rd** declare that I am the owner or the person responsible for the husbandry of the sheep or lambs and that all the information in part A of this document is true and correct.

I also declare that I have read and understood all the questions that I have answered, that I have read and understood the explanatory notes, and that, while under my control, the sheep or lambs were not fed restricted animal material (including meat and bone meal) in breach of State or Territory legislation.

Signature\* **[Signature]** Date\* **29 / 8 / 2018**  
\*Only the person whose name appears above may sign this declaration or make amendments which must be initialled.

Tel no. **0427 812227** Fax no. **03 50 812255**

**Part B - To be completed by the person in charge of the sheep or lambs while they are being moved.**  
 Completion of this part is optional in SA and VIC.

Movement commenced: on **29 / 8 / 2018** at **12:00** (am/pm)

Vehicle registration number(s) **1** : **1** (am/pm)

I, **Andrew Donnan** am the person in charge of the sheep or lambs during the movement and declare all the information in Part B is true and correct.

Signature **[Signature]** Date **29 / 8 / 2018** Tel no. **0427 812227**  
\*When more than one truck is carrying the sheep or lambs, other vehicle registration numbers are to be recorded.

**Part C - Agents declaration for sheep or lambs sold at auction. (Completion of Part C is optional.)**  
 Agents completing Part C should retain the original or a scanned copy of the original declaration or a summary for a minimum of two (2) years, or three (3) years in WA and supply a copy or summary to any buyer on request.

Vendor code **1** Agent's code **1**

Stock agent company **1**

Buyer's name **1** Destination PIC **1**

No. of sheep or lambs purchased **1** Saleyard arrival time (am/pm) **1**  
 Agent's signature **1** Date **29 / 8 / 2018**

## NATIONAL SHEEP HEALTH STATEMENT (SHS)

*Completing this Sheep Health Statement (SHS) will assist prospective buyers to determine the suitability of these sheep for their enterprise. Although the SHS is voluntary in some states, it is mandatory in NSW and SA. (Version 3, July 2013)*

Attached to accompanying NVD/Waybill No.	2 0 2 4 5 5 3 4	PIC of the consignment property	3 B U E T O I I
--	-----------------	---------------------------------	-----------------

### A: BIOSECURITY INFORMATION

A1. All consigned sheep were born on the consignment property.	Yes <input checked="" type="checkbox"/> No <input type="checkbox"/>
A2. The number of different sources of sheep that have been <b>INTRODUCED</b> onto the consignment property in the last 5 years is: 0 (closed flock) <input type="checkbox"/> 1-5 <input type="checkbox"/> 6+ <input checked="" type="checkbox"/> Rams Only <input type="checkbox"/>	
A3. All consigned sheep are from a property with a livestock biosecurity plan. (see note 1) If Yes, Property Plan <input checked="" type="checkbox"/> Regional Biosecurity Plan <input type="checkbox"/> .....(name)	Yes <input checked="" type="checkbox"/> No <input type="checkbox"/>

### B: FOOTROT / LICE / OVINE BRUCELLOSIS

B1. To the best of my knowledge, all consigned sheep are from a <b>flock free</b> of VIRULENT FOOTROT.	Yes <input checked="" type="checkbox"/> No <input type="checkbox"/>
B2. To the best of my knowledge, all consigned sheep are from a <b>flock free</b> of LICE.	Yes <input checked="" type="checkbox"/> No <input type="checkbox"/>
B3. All consigned sheep are from a flock in an OVINE BRUCELLOSIS Scheme. If Yes, Flock Accreditation No. (except Qld) ..... 2063 ..... Expiry Date 30/4/2020	Yes <input checked="" type="checkbox"/> No <input type="checkbox"/>

### C: OVINE JOHNE'S DISEASE (OJD)

C1. All consigned sheep are from a SheepMAP flock. (see note 2) <i>No</i> <input type="checkbox"/> <i>Yes</i> <input checked="" type="checkbox"/> If yes, Status: ..... <i>MIN3</i> ..... Year commenced in SheepMAP: ..... <i>1998</i> .....	Yes <input checked="" type="checkbox"/> No <input type="checkbox"/>
C2. All consigned sheep are from a flock with a negative test for OJD. (see note 3) If Yes, which test? Faecal 350 within the past 24 months <input checked="" type="checkbox"/> Abattoir 500 within the past 24 months <input type="checkbox"/> Abattoir 150 within the past 12 months <input type="checkbox"/> Other (see note 4) ..... <input type="checkbox"/>	Yes <input checked="" type="checkbox"/> No <input type="checkbox"/>
C3. To the best of my knowledge, all consigned sheep are from a <b>flock not</b> infected or suspected of being infected with OJD. (see note 5)	Yes <input checked="" type="checkbox"/> No <input type="checkbox"/>
C4. All consigned lambs are T tag lambs. (see note 6)	Yes <input type="checkbox"/> No <input checked="" type="checkbox"/>
C5. (a) All consigned sheep are Approved Vaccinates. (see note 7) (b) If Yes, I have been continuously vaccinating all retained lambs in the consignment flock for OJD for ..... years.	Yes <input type="checkbox"/> No <input checked="" type="checkbox"/>
C6. Sheep <b>INTRODUCED</b> onto the consignment property in the last 5 years were from a flock with: (see notes 2,3 and 7 - multiple answers may be applicable) SheepMAP accreditation <input checked="" type="checkbox"/> Negative Faecal 350 <input type="checkbox"/> Negative Abattoir 500 <input type="checkbox"/> Negative Abattoir 150 <input type="checkbox"/> All Approved Vaccinates <input type="checkbox"/> Unknown status <input type="checkbox"/> Other <input type="checkbox"/> (see note 8) .....	

### D: TREATMENT INFORMATION OF CONSIGNED SHEEP

Treatment	Product	Last Treatment
External Parasite Treatment	Avenge Gold	Month Aug.. Year 2018
Internal Parasite Treatment	Ivermec	Month Aug... Year 2018
Vaccination (other than OJD)	Cyanac 6 - B12	Month Aug.. Year 2018

### E: ADDITIONAL INFORMATION (optional - see note 9)


### F: DECLARATION (see note 10)

I (full name): <i>Andrew Deanna</i>	
Address: <i>111 Willangie - Woodroffe Rd WILLANGIE 3485</i>	
declare that, I am the owner and/or person responsible for the husbandry of the sheep in this consignment and all the information on this Sheep Health Statement is true and correct.	
Signed: <i>A. Deanna</i>	Date: <i>29 / 8 / 2018</i>
Phone Number: <i>0427 812227</i>	Fax number/email: <i>03 52812255</i>

Producers are advised to retain appropriate records to support this declaration. Persons making false statements may be liable under fair trading and other relevant state legislation.



# NOTES





Joel holding Anden 150277 'Cruiser' – Supreme Champion of all Breeds, Royal Adelaide Show. Sold for \$68,000, National Record price for a White Suffolk and all meat sheep breeds ram, at the 2016 On Property Sale. Surrounded by key participants – Lauren Donnan; purchaser Leroy Hull; John and Andrew Donnan; Elders stud stock auctioneer Ross Milne; purchaser Geoff Hull; and Denita Donnan.



2015 On Property Sale: Anden's Joel Donnan holds the \$36,000 sale topping and equal Australian auction record priced White Suffolk ram, Anden 140298. Standing behind the ram are purchaser, Nathan Ditchburn, Golden Hills stud, Kukerin, WA; Anden principal Andrew Donnan; Ditchburn's stud advisor Mark Edwards; and Elders WA Stud Stock Manager, Tim Spicer.



**'ANDEN STUD'**  
 1117 Willangie-Woomelang Road,  
 Willangie, Vic.

---

**~ Abbreviations used in this booklet ~**

BWT – birth weight. WWT – weaning weight.

PWWT – weight gain. PFAT – fat depth.

PEMD – eye muscle depth.

---